

Eagan Woods Office Center

2600 Eagan Woods Drive | Eagan, MN 55121



Building Size
81,293 sq ft

Year Built
1985

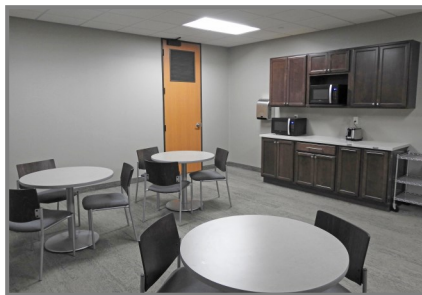
Space Available
2,073 - 15,085 RSF

Rate
\$14 - \$15/RSF

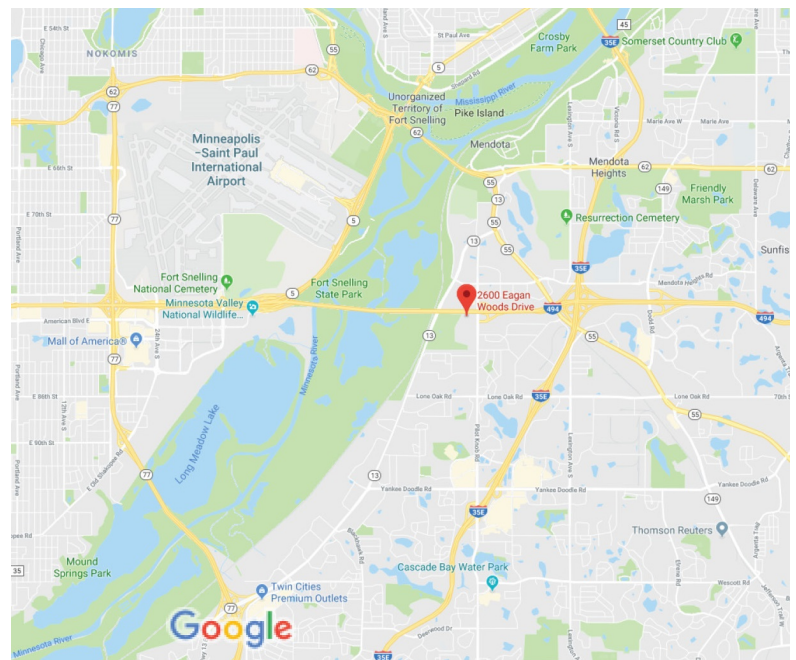
2020 OPEX & RE Taxes
\$10.31/RSF

Operating Expenses
\$6.85/RSF

RE Taxes
\$3.46/RSF



Immediate Access to I-494 & Pilot Knob Road



- ◆ Newly renovated common areas
- ◆ Building conference room
- ◆ Touch screen building directory
- ◆ Controlled access entry system
- ◆ Lots of natural light
- ◆ Ample surface parking
- ◆ Wooded walking trails
- ◆ Close proximity to restaurants and shopping
- ◆ Near airport and major hotels
- ◆ Minutes from downtown

Contact Broker: Jeff Houg

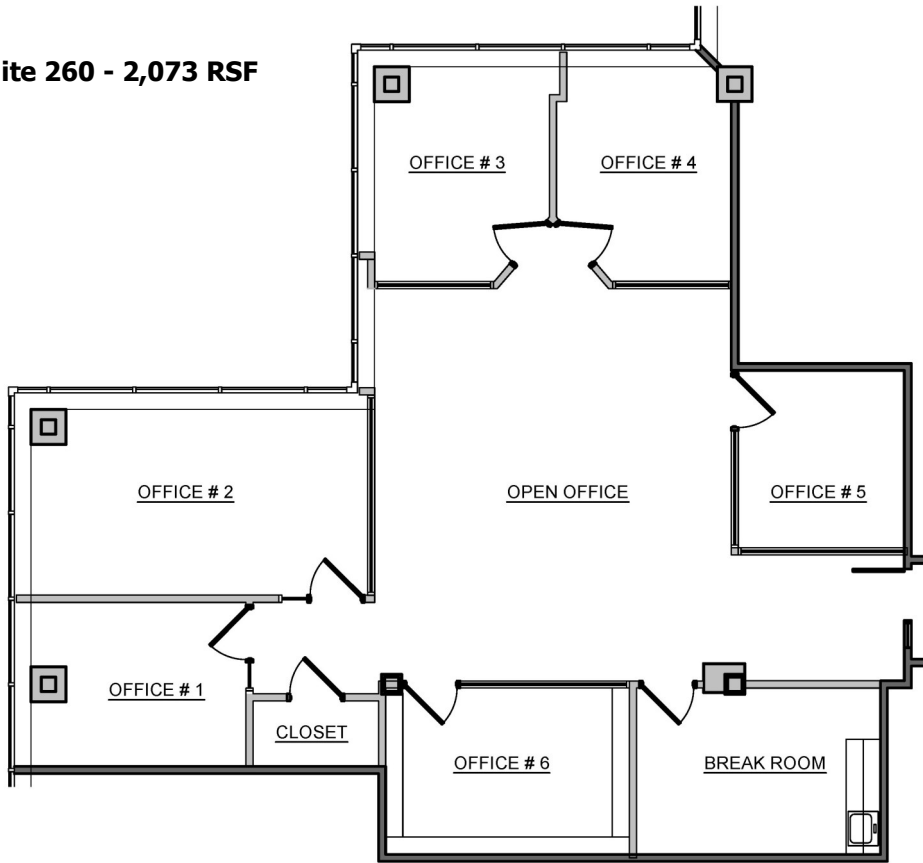
D: 952-300-9545 | M: 612-889-2242 | jhoug@shcre.com | www.shcre.com

Eagan Woods Office Center

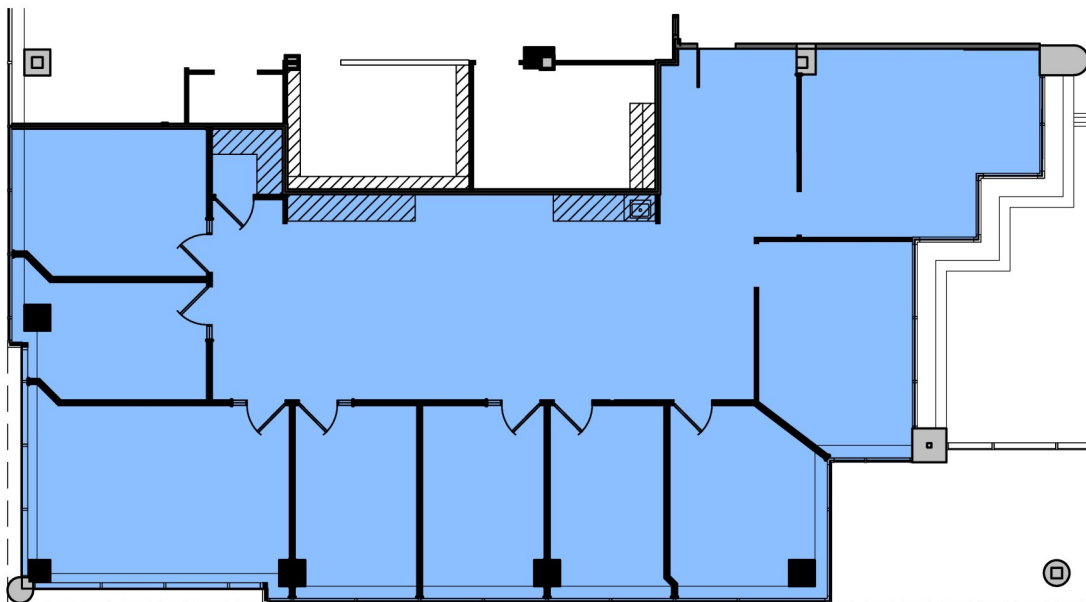
2600 Eagan Woods Drive | Eagan, MN 55121



Suite 260 - 2,073 RSF



Suite 265 - 3,098 RSF



Contact Broker: Jeff Houg

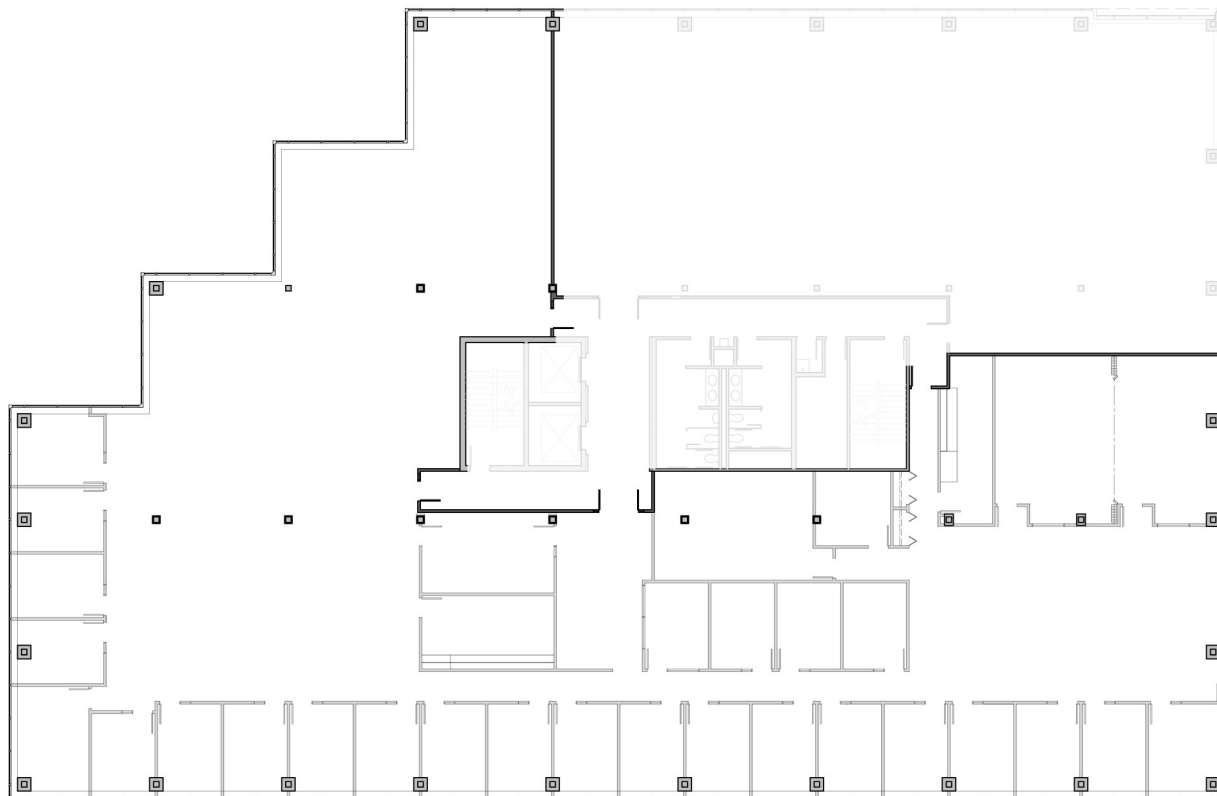
D: 952-300-9545 | M: 612-889-2242 | jhoug@shcre.com | www.shcre.com

Eagan Woods Office Center

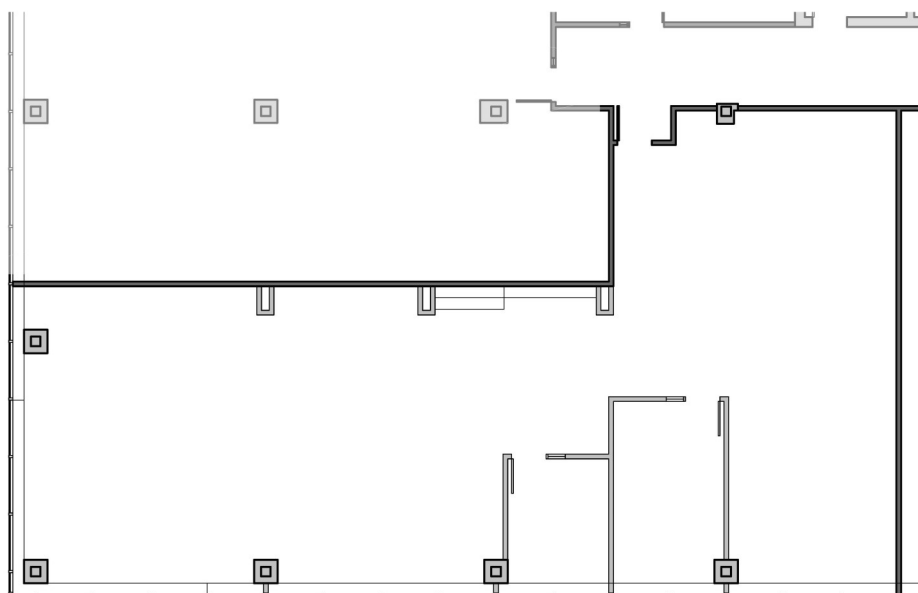
2600 Eagan Woods Drive | Eagan, MN 55121



Suite 300 - 15,085 RSF - Available 8/1/2020



Suite 462 - 2,922 RSF



Contact Broker: Jeff Houg

D: 952-300-9545 | M: 612-889-2242 | jhoug@shcre.com | www.shcre.com