

Goldridge Building

3021 Harbor Lane North | Plymouth, MN 55447



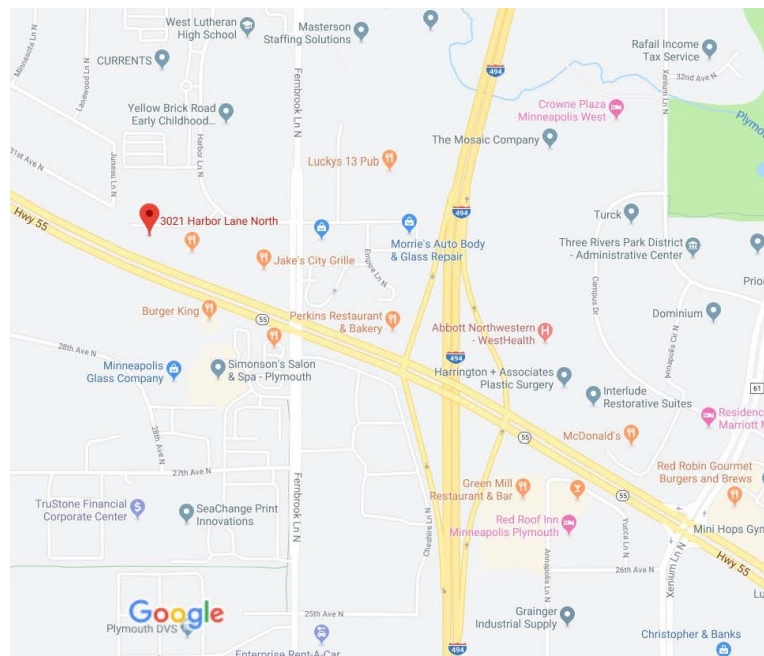
- ◆ Highly visible on Hwy 55
- ◆ Controlled access entry system
- ◆ Located next to developing area with medical use buildings
- ◆ Close proximity to restaurants, hotels, FedEx, Starbucks, Caribou Coffee, Life Time Fitness, & Orangetheory Fitness.
- ◆ Suite 103 has a private entrance.

Year Built: 1997

Space Available: 4,114 RSF

Modified Gross Rate: \$23.50/RSF

Located in the NW corner of 494 & HWY 55

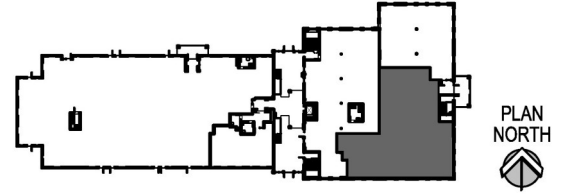


Contact Broker: Jeff Houg

D: 952-300-9545 | M: 612-889-2242 | jhoug@shcre.com | www.shcre.com

Goldridge Building

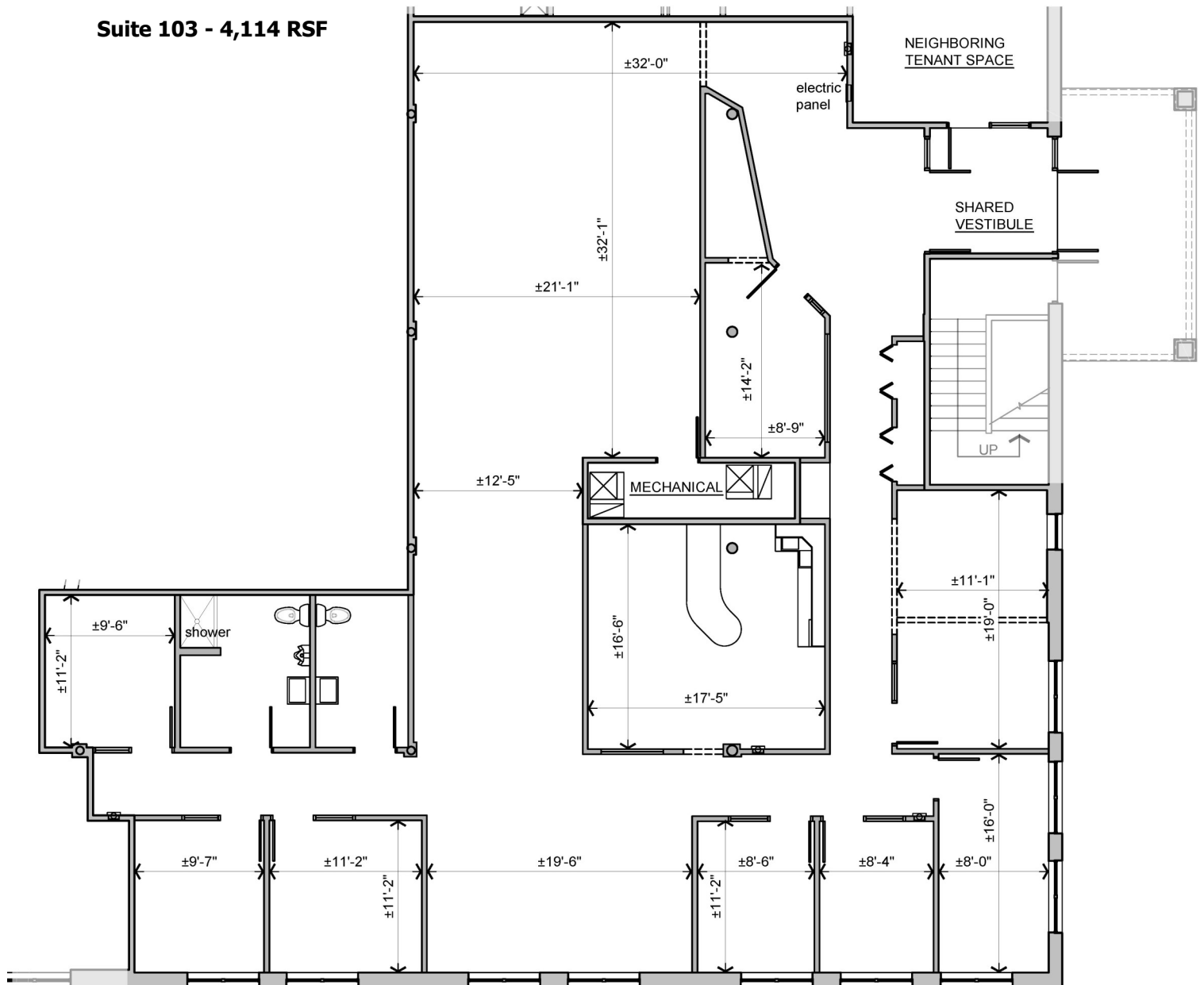
3021 Harbor Lane North | Plymouth, MN 55447



FIRST FLOOR REFERENCE MAP

Scale: 1" = 100'-0"

Suite 103 - 4,114 RSF



Contact Broker: Jeff Houg

D: 952-300-9545 | M: 612-889-2242 | jhoug@shcre.com | www.shcre.com