

# Normandale Place

8201 Norman Center Drive | Bloomington, MN 55437



**Building Size**  
82,017 sq ft

**Year Built**  
1973

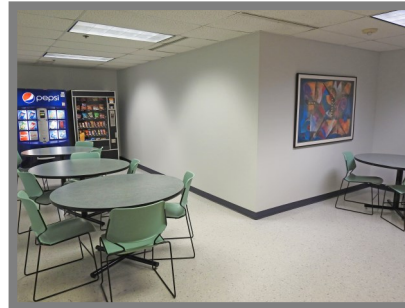
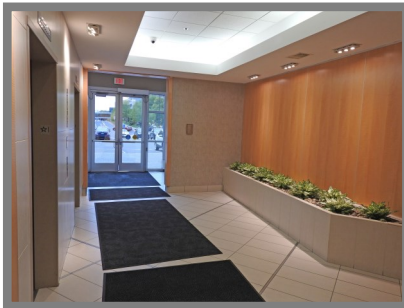
**Space Available**  
2,556 - 11,463 RSF

**Rate**  
\$15.00/RSF

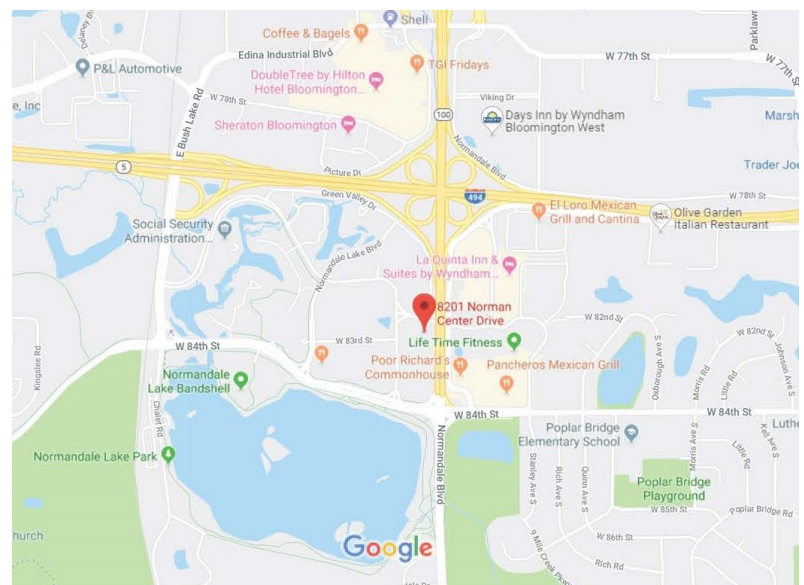
**2020 OPEX & RE Taxes**  
\$11.72/RSF

**Operating Expenses**  
\$7.25/RSF

**RE Taxes**  
\$4.47/RSF



## Located in the SW corner of I-494 & HWY 100



- ◆ Controlled access entry system
- ◆ Lots of natural light with floor to ceiling windows
- ◆ Minutes from the MSP Airport
- ◆ Close proximity to restaurants, shopping, Caribou Coffee, & Life Time Fitness
- ◆ Near walking trails

**Contact Broker: Jeff Houg**

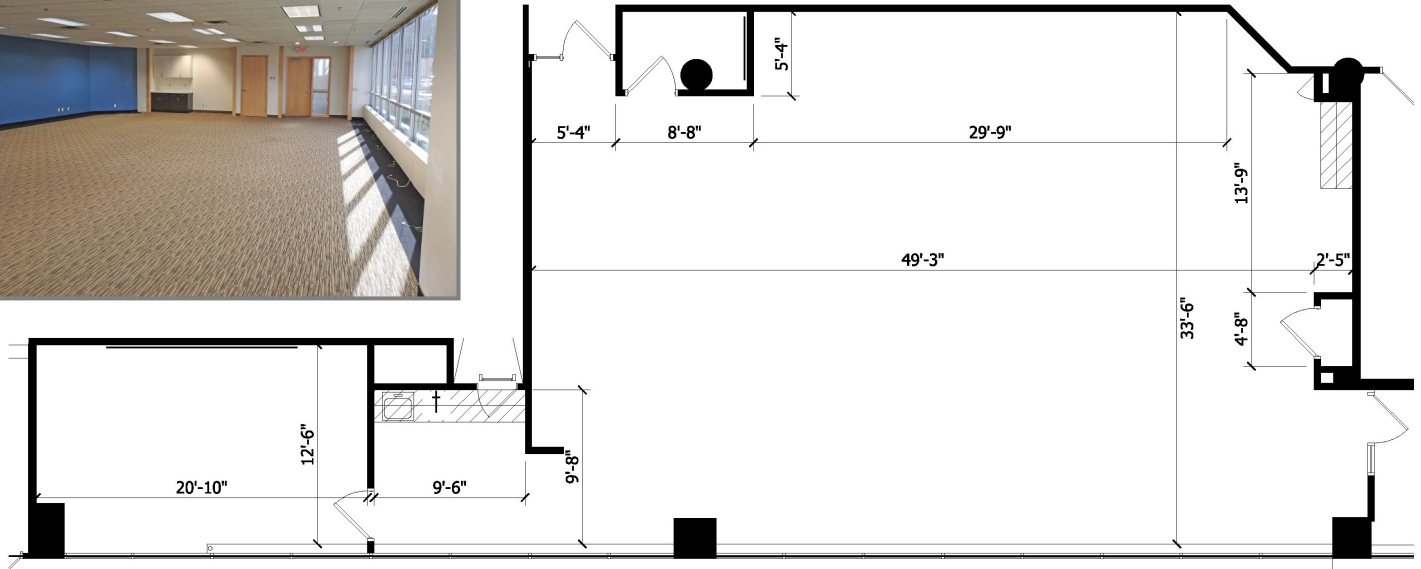
**D: 952-300-9545 | M: 612-889-2242 | [jhoug@shcre.com](mailto:jhoug@shcre.com) | [www.shcre.com](http://www.shcre.com)**

# Normandale Place

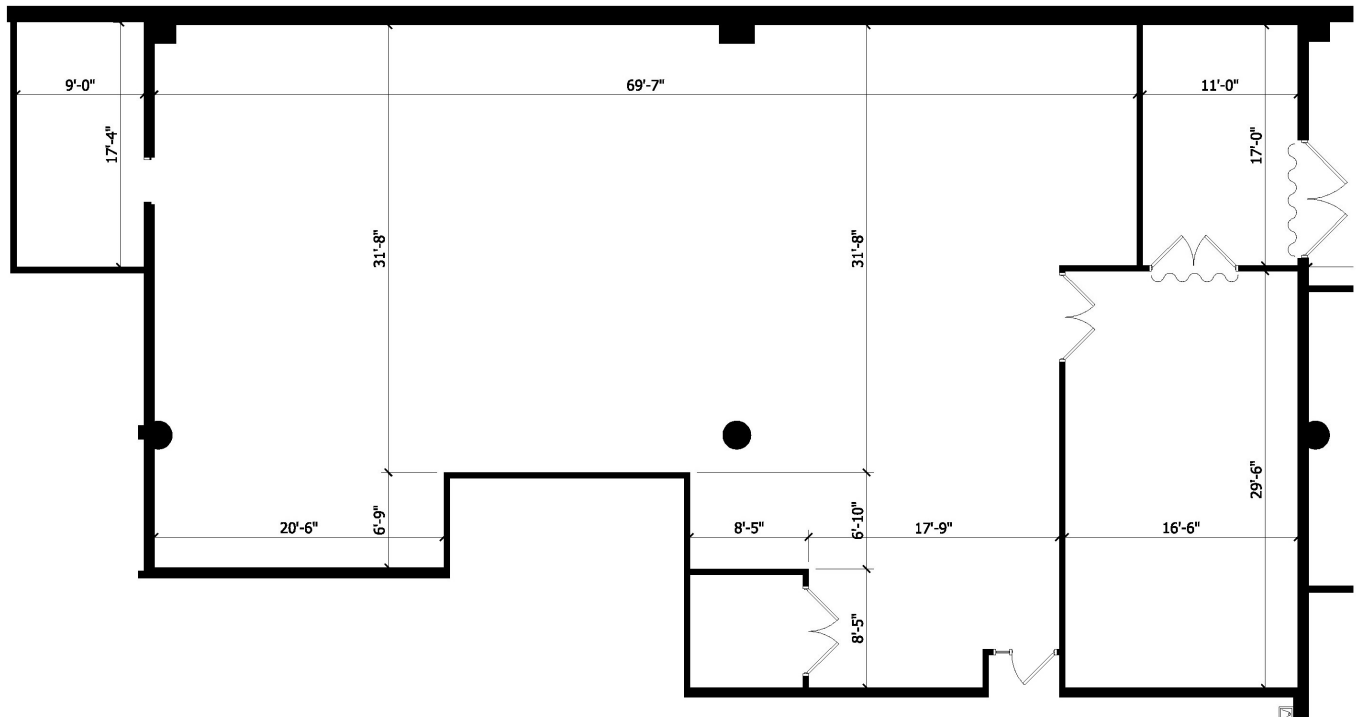
8201 Norman Center Drive | Bloomington, MN 55437



## Suite 100 - 2,556 RSF



## Suite 120 - 4,191 RSF



Contact Broker: Jeff Houg

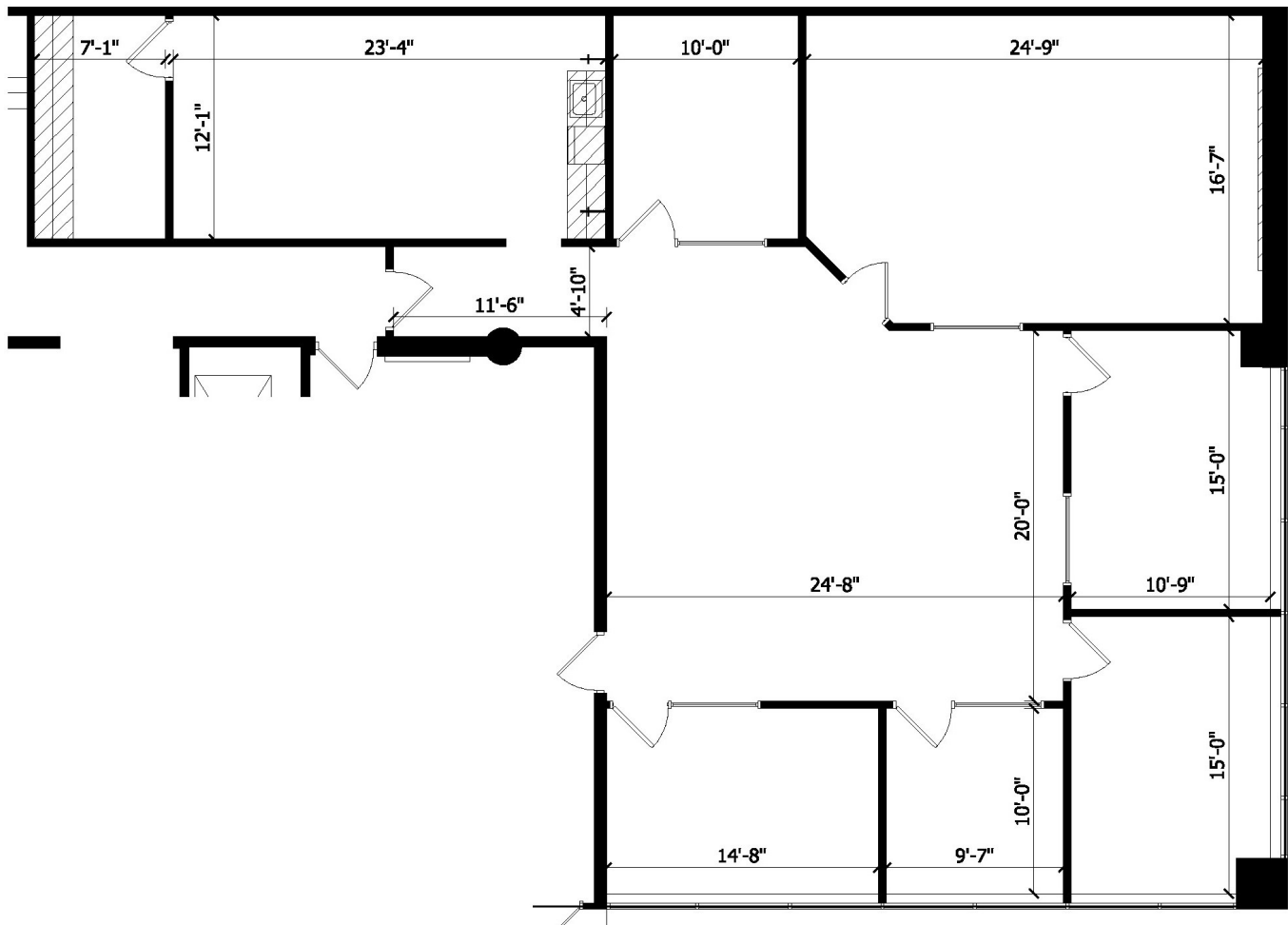
D: 952-300-9545 | M: 612-889-2242 | [jhoug@shcre.com](mailto:jhoug@shcre.com) | [www.shcre.com](http://www.shcre.com)

# Normandale Place

8201 Norman Center Drive | Bloomington, MN 55437



Suite 150 - 2,578 RSF



Contact Broker: Jeff Houg

D: 952-300-9545 | M: 612-889-2242 | [jhoug@shcre.com](mailto:jhoug@shcre.com) | [www.shcre.com](http://www.shcre.com)

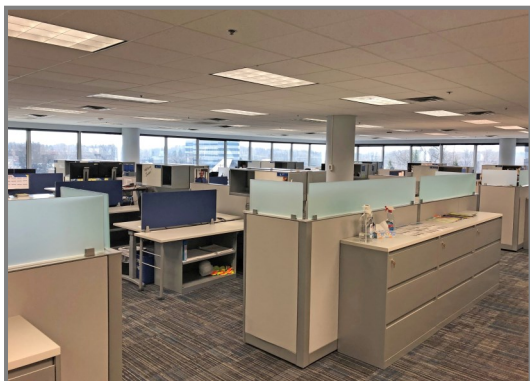
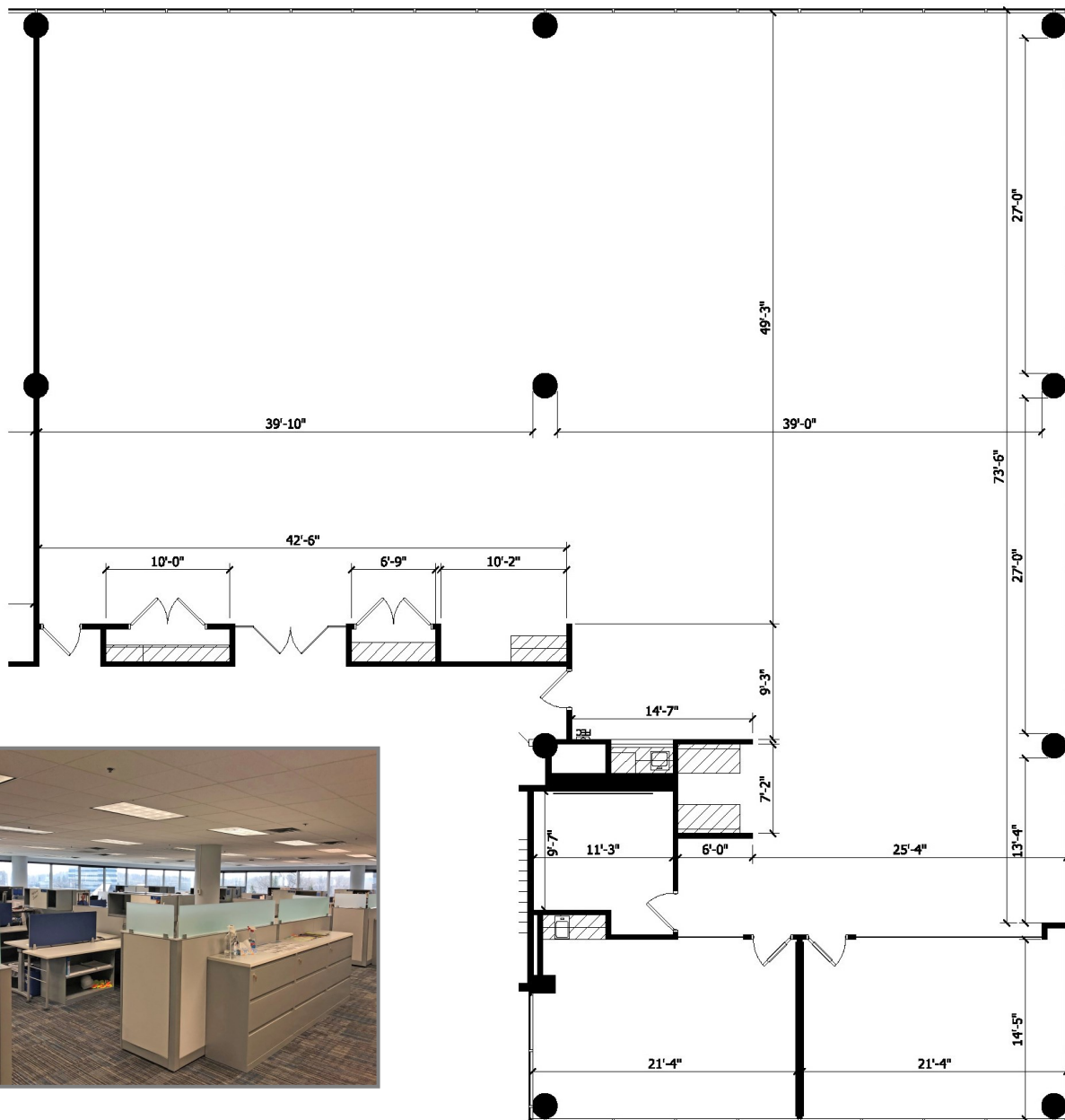
# Normandale Place

8201 Norman Center Drive | Bloomington, MN 55437



Suite 400 - 6,908 RSF - Available 7/1/2020

\* Suite 400 & 410 are contiguous for a total of 11,463 RSF



Contact Broker: Jeff Houg

D: 952-300-9545 | M: 612-889-2242 | [jhoug@shcre.com](mailto:jhoug@shcre.com) | [www.shcre.com](http://www.shcre.com)

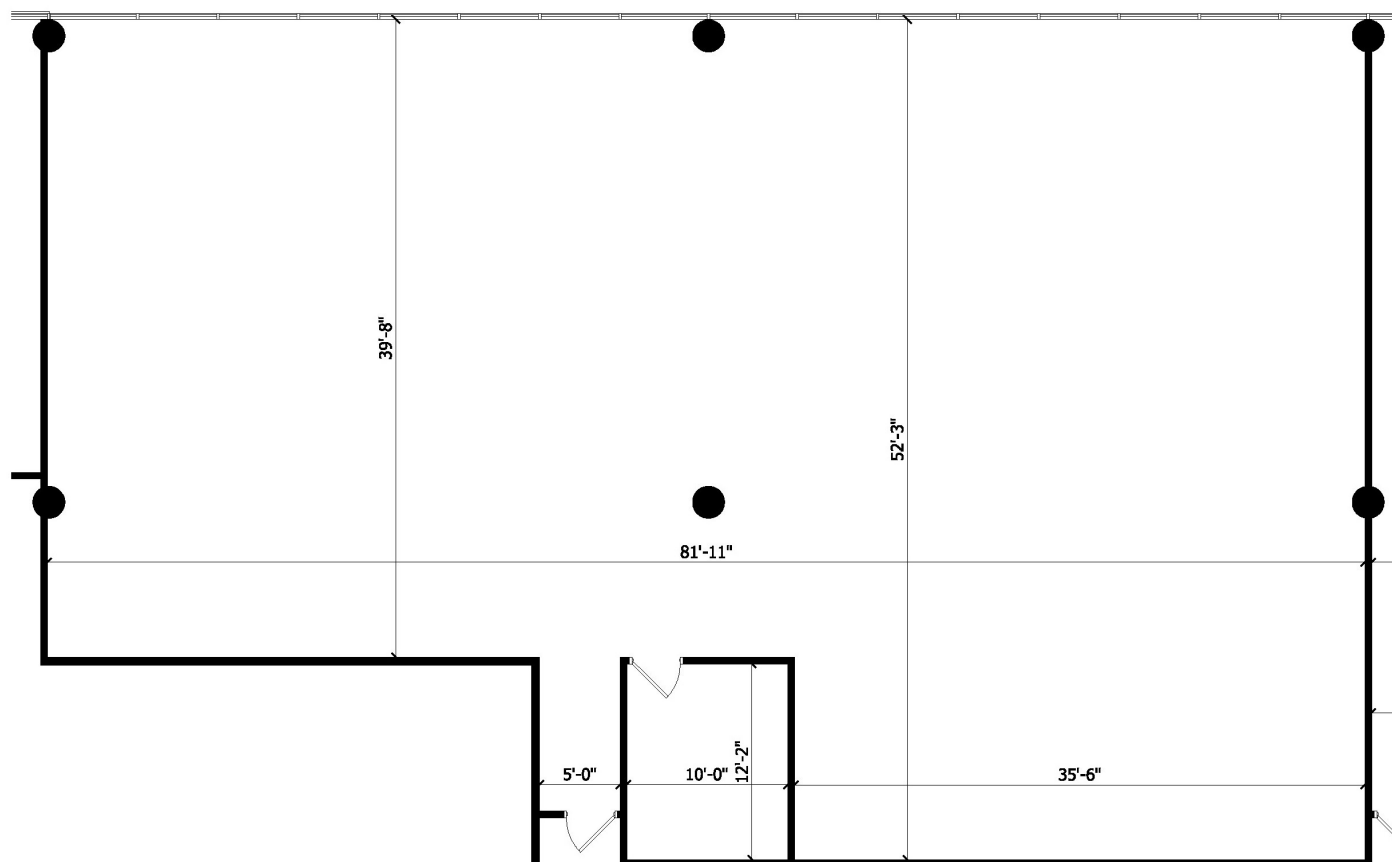
# Normandale Place

8201 Norman Center Drive | Bloomington, MN 55437



**Suite 410 - 4,555 RSF**

**\* Suite 400 & 410 are contiguous for a total of 11,463 RSF**



**Contact Broker: Jeff Houg**

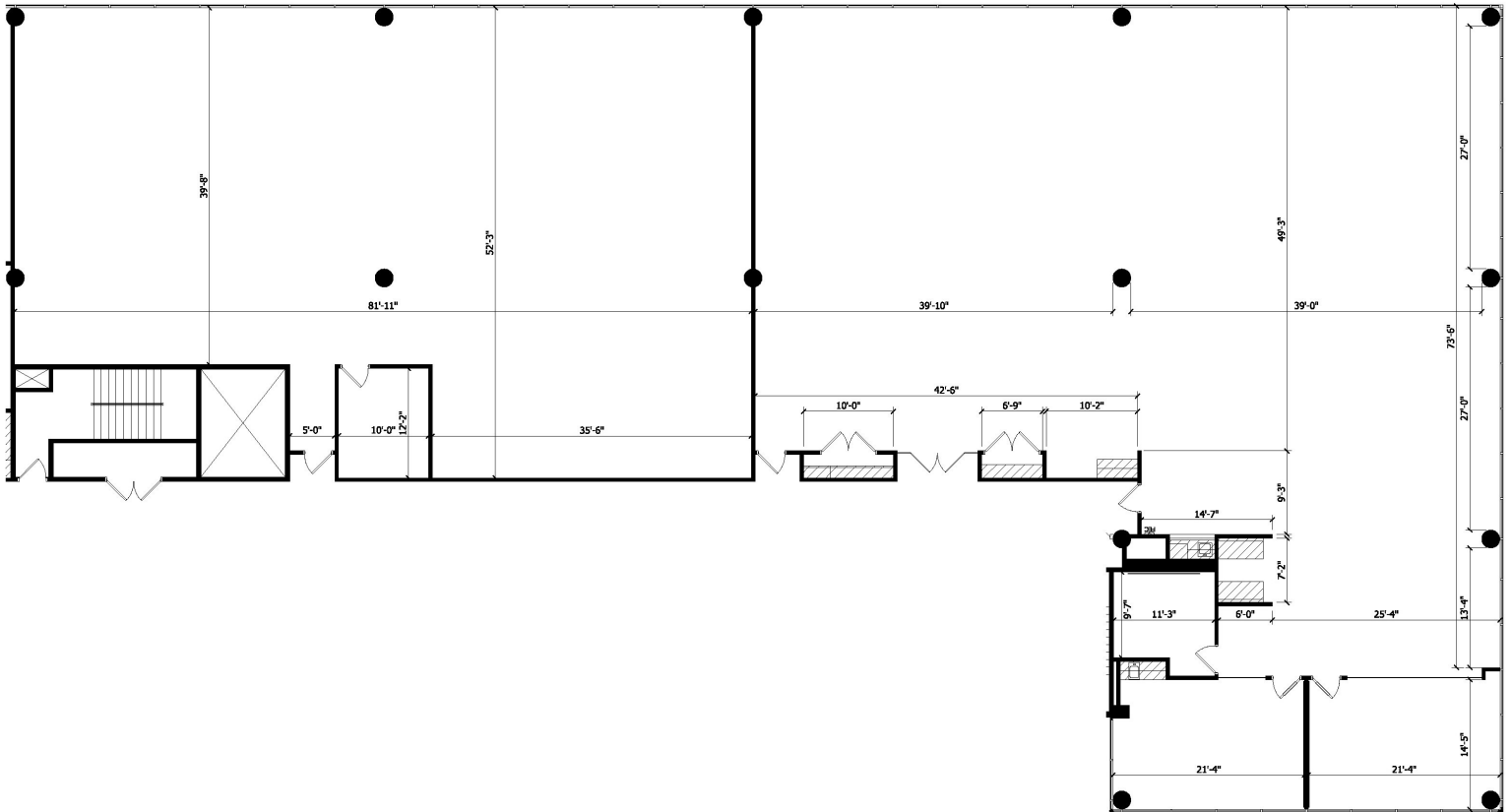
**D: 952-300-9545 | M: 612-889-2242 | [jhoug@shcre.com](mailto:jhoug@shcre.com) | [www.shcre.com](http://www.shcre.com)**

# Normandale Place

8201 Norman Center Drive | Bloomington, MN 55437



Suite 400 & 410 combined - 11,463 RSF



Contact Broker: Jeff Houg

D: 952-300-9545 | M: 612-889-2242 | [jhoug@shcre.com](mailto:jhoug@shcre.com) | [www.shcre.com](http://www.shcre.com)