

Normandale Place

8201 Norman Center Drive | Bloomington, MN 55437



Building Size
82,017 sq ft

Year Built
1973

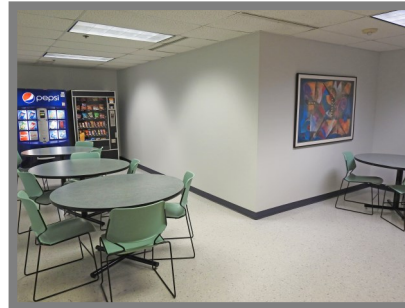
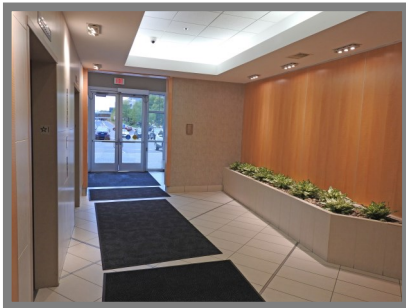
Space Available
2,556 - 11,463 RSF

Rate
\$15.00/RSF

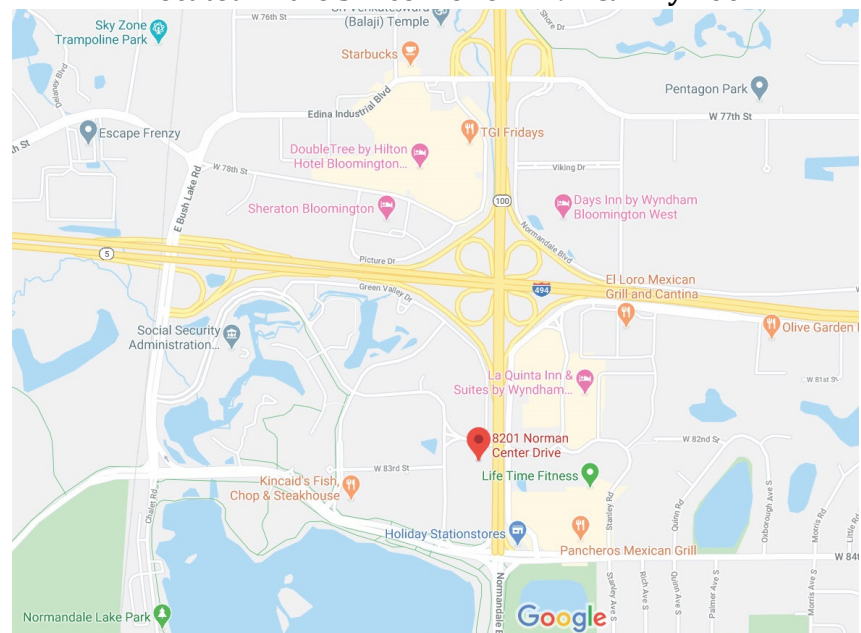
2020 OPEX & RE Taxes
\$11.72/RSF

Operating Expenses
\$7.25/RSF

RE Taxes
\$4.47/RSF



Located in the SW corner of I-494 & Hwy 100



- ◆ Controlled access entry system
- ◆ Lots of natural light with floor to ceiling windows
- ◆ Minutes from the MSP Airport
- ◆ Close proximity to restaurants, shopping, Caribou Coffee, & Life Time Fitness
- ◆ Near walking trails

Contact Broker: Jeff Houg

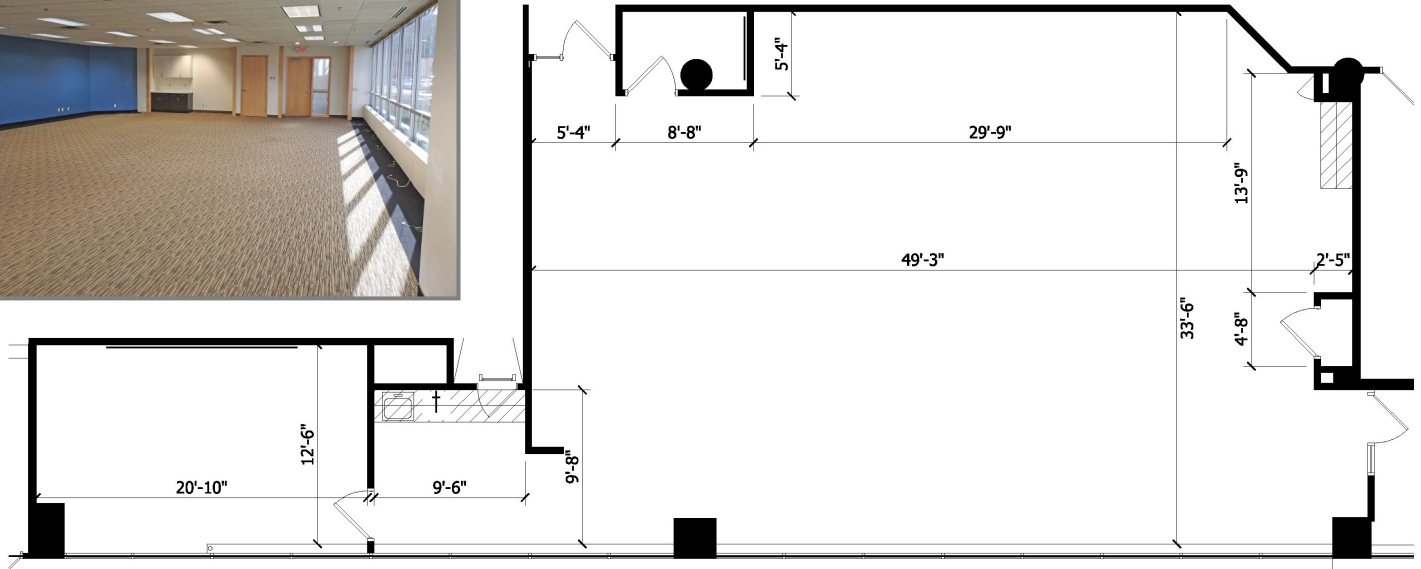
D: 952-300-9545 | M: 612-889-2242 | jhoug@shcre.com | www.shcre.com

Normandale Place

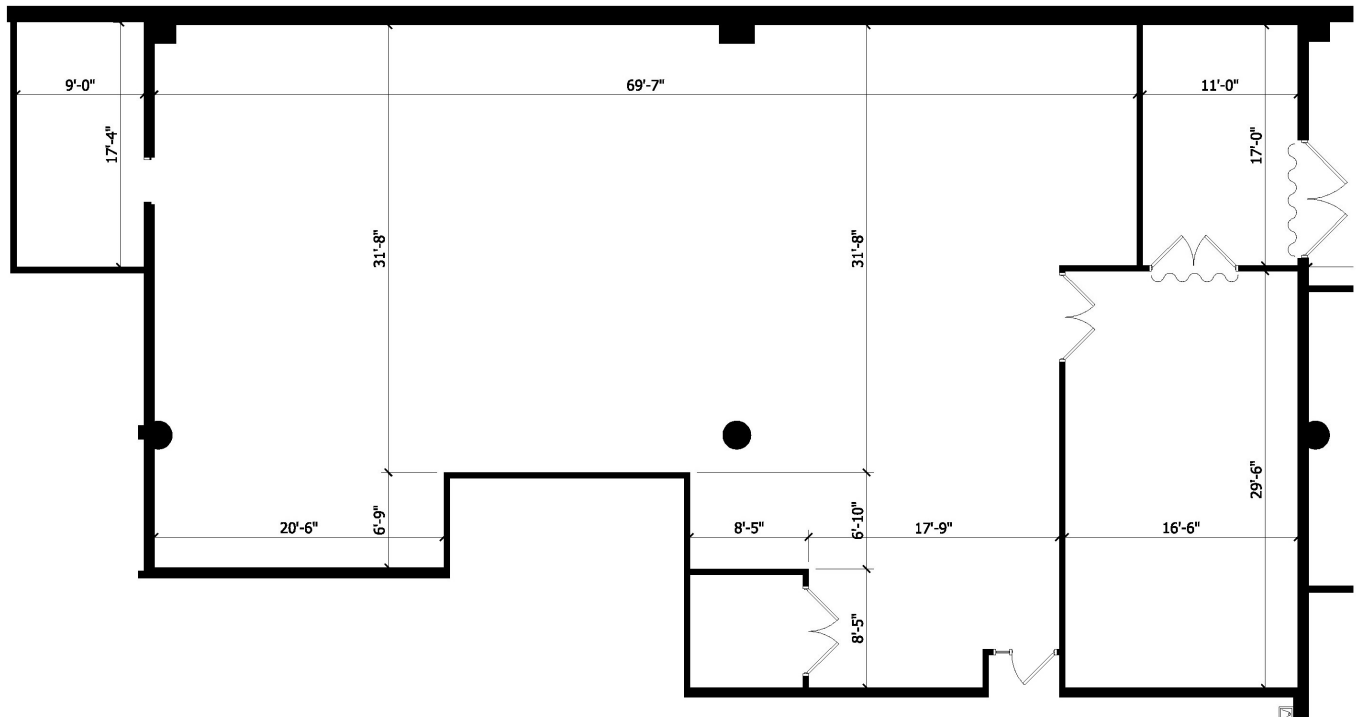
8201 Norman Center Drive | Bloomington, MN 55437



Suite 100 - 2,556 RSF



Suite 120 - 4,191 RSF



Contact Broker: Jeff Houg

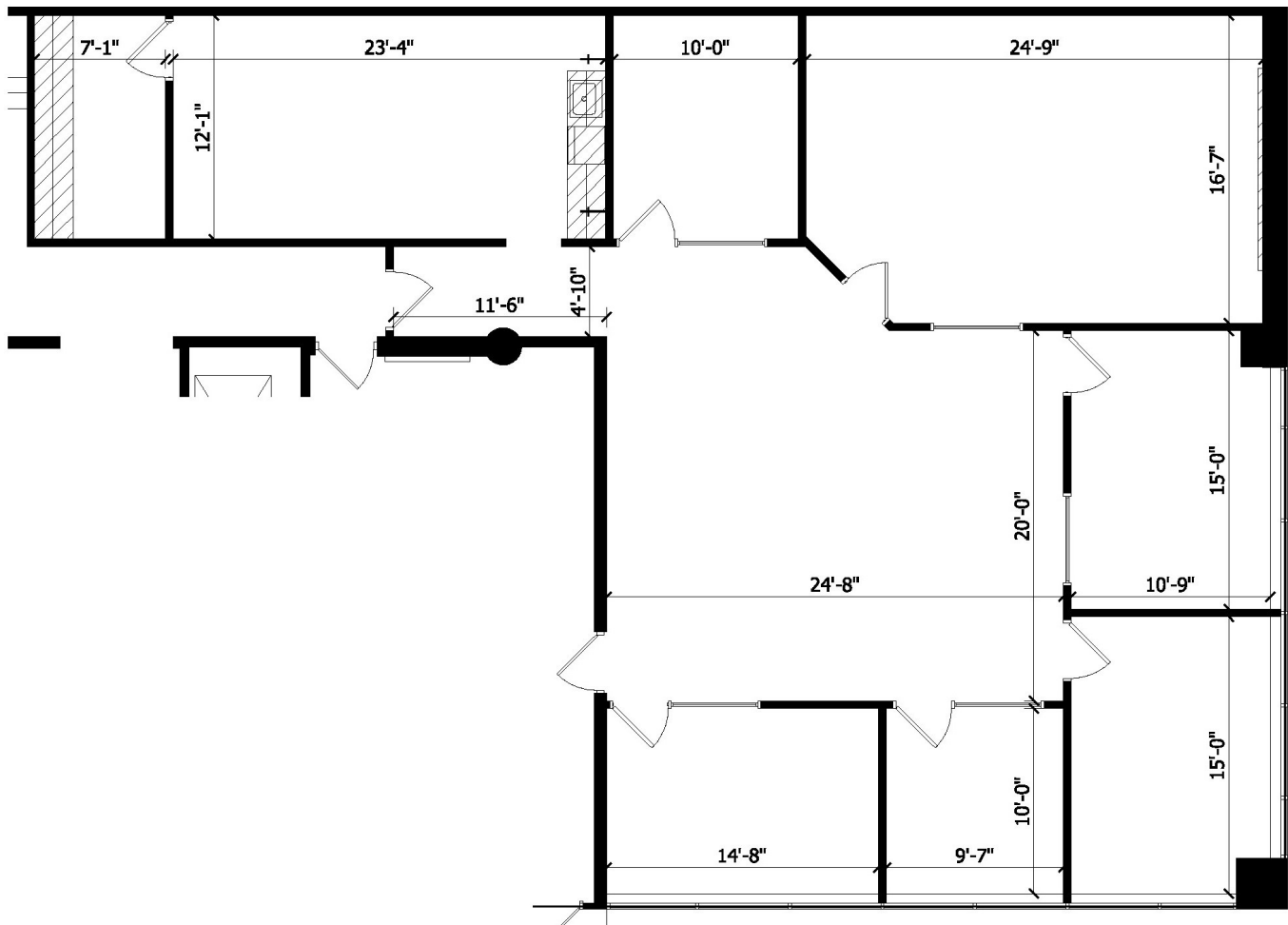
D: 952-300-9545 | M: 612-889-2242 | jhoug@shcre.com | www.shcre.com

Normandale Place

8201 Norman Center Drive | Bloomington, MN 55437



Suite 150 - 2,578 RSF



Contact Broker: Jeff Houg

D: 952-300-9545 | M: 612-889-2242 | jhoug@shcre.com | www.shcre.com

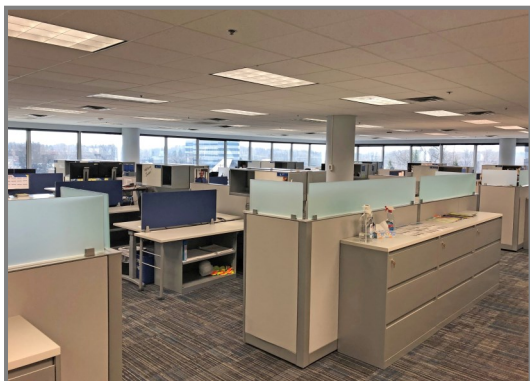
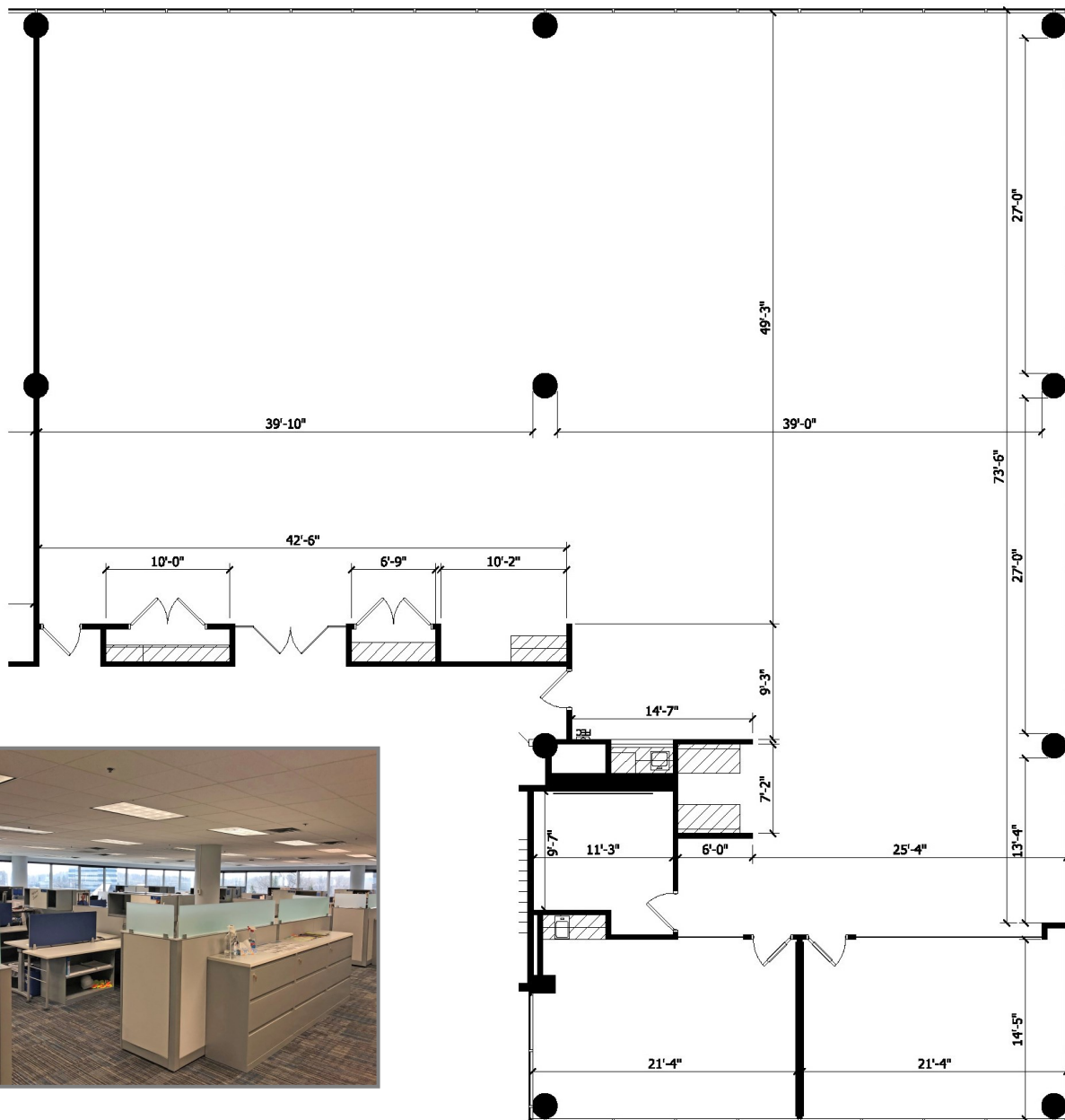
Normandale Place

8201 Norman Center Drive | Bloomington, MN 55437



Suite 400 - 6,908 RSF

*** Suite 400 & 410 are contiguous for a total of 11,463 RSF**



Contact Broker: Jeff Houg

D: 952-300-9545 | M: 612-889-2242 | jhoug@shcre.com | www.shcre.com

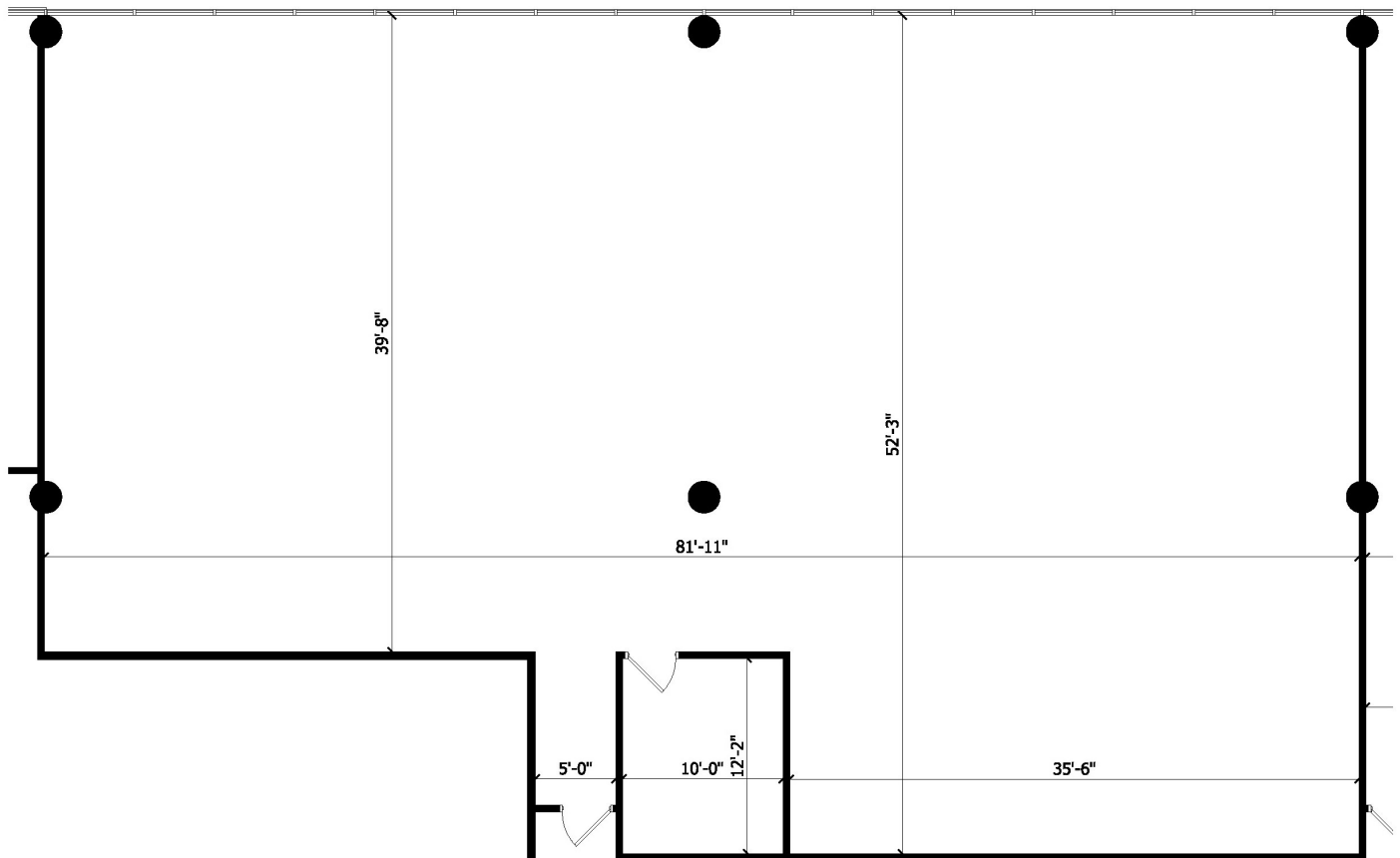
Normandale Place

8201 Norman Center Drive | Bloomington, MN 55437



Suite 410 - 4,555 RSF

*** Suite 400 & 410 are contiguous for a total of 11,463 RSF**



Contact Broker: Jeff Houg

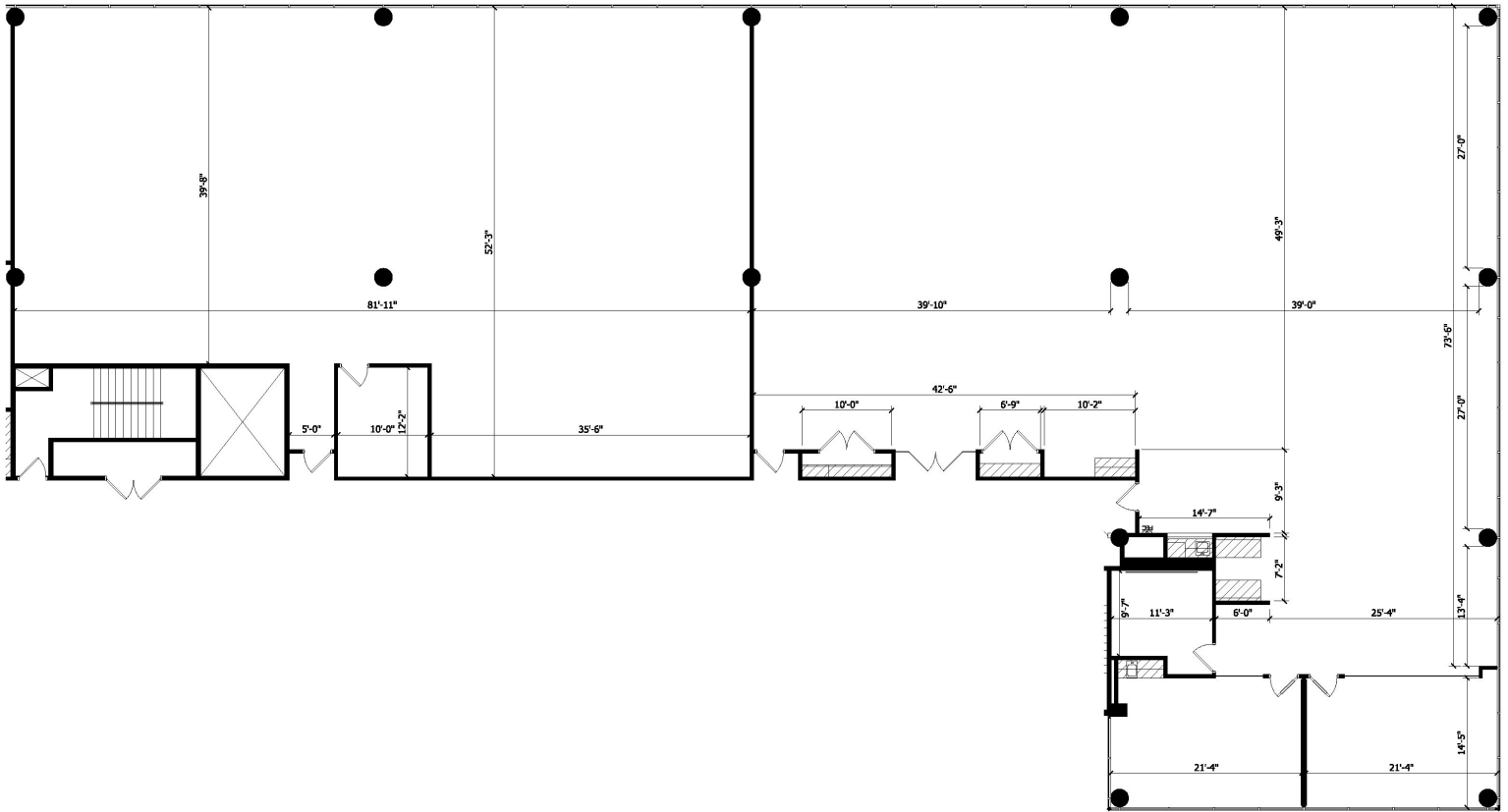
D: 952-300-9545 | M: 612-889-2242 | jhoug@shcre.com | www.shcre.com

Normandale Place

8201 Norman Center Drive | Bloomington, MN 55437



Suite 400 & 410 combined - 11,463 RSF



Contact Broker: Jeff Houg

D: 952-300-9545 | M: 612-889-2242 | jhoug@shcre.com | www.shcre.com