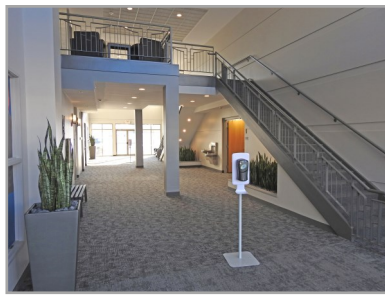
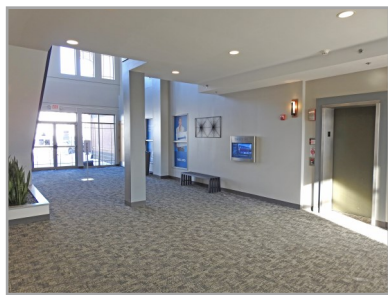


Goldridge Building

3021 Harbor Lane North | Plymouth, MN 55447



- Immediate access to I-494 and Hwy 55.
Easy access to I-394 and Hwy 169.
- High visibility on Hwy 55
- Controlled access entry system
- Touch screen building directory
- Located next to developing area with medical use buildings.
- Close proximity to restaurants, hotels, FedEX, Starbucks, Caribou Coffee, Life Time Fitness, and Orangetheory Fitness.
- 2 Miles from Parkers Lake and the Luce Line Trail.

OFFICE SPACE FOR LEASE

Space Available: 1,762 - 4,302 RSF

NNN Rate: \$14 - \$15/RSF

2021 OPEX & RE Taxes: \$12.25/RSF

Operating Expenses: \$6.42/RSF

RE Taxes: \$5.83/RSF

Jeff Houg

D: 952-300-9545

M: 612-889-2242

jhoug@shcre.com

www.shcre.com



Goldridge Building

3021 Harbor Lane North | Plymouth, MN 55447

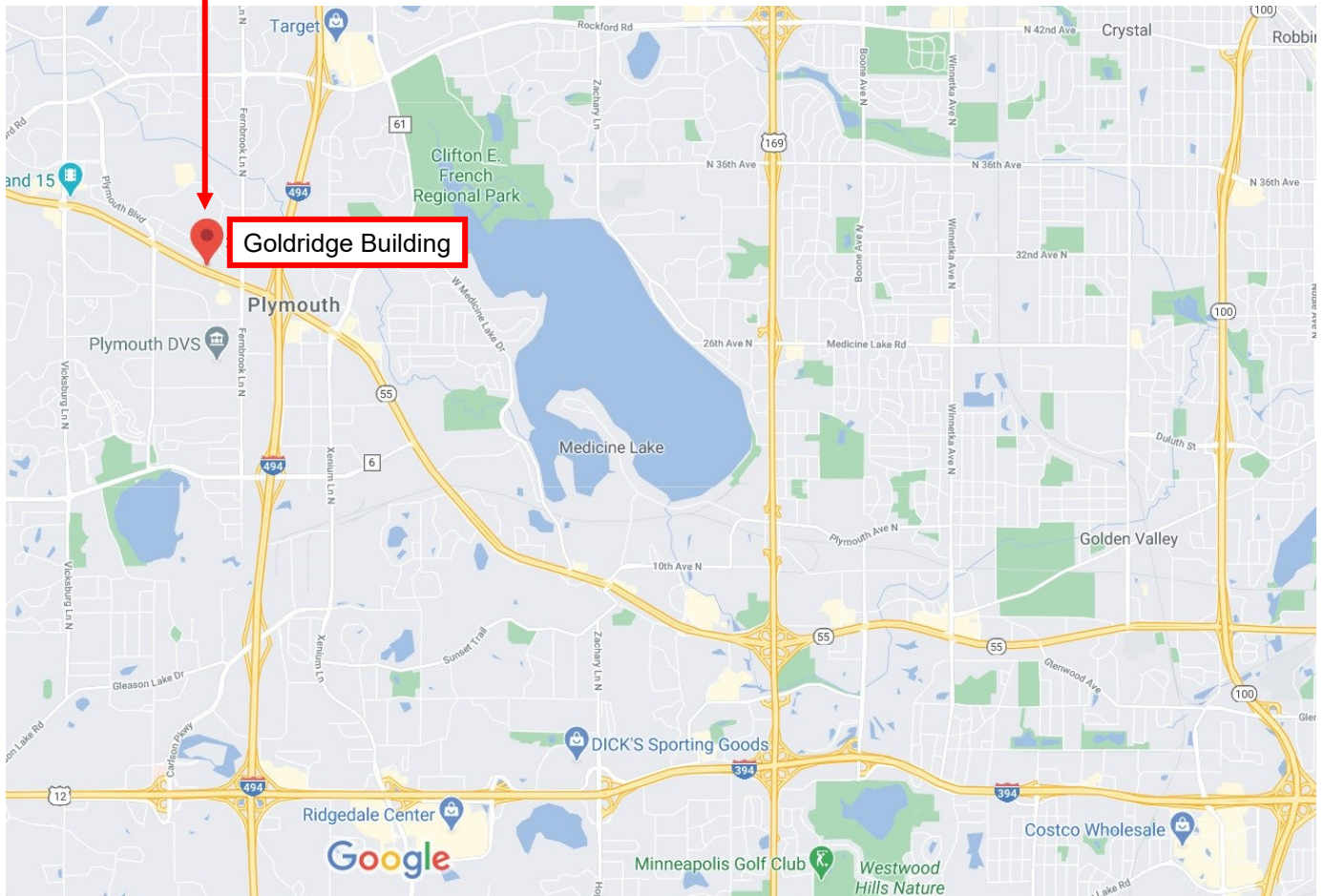
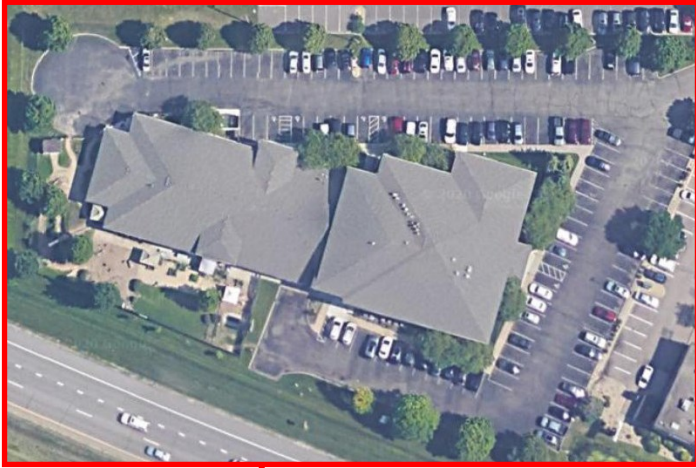
Jeff Houg

D: 952-300-9545

M: 612-889-2242

jhoug@shcre.com

www.shcre.com



Goldridge Building

3021 Harbor Lane North | Plymouth, MN 55447

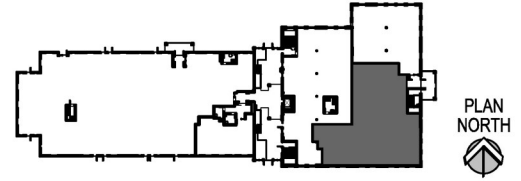
Jeff Houg

D: 952-300-9545

M: 612-889-2242

jhoug@shcre.com

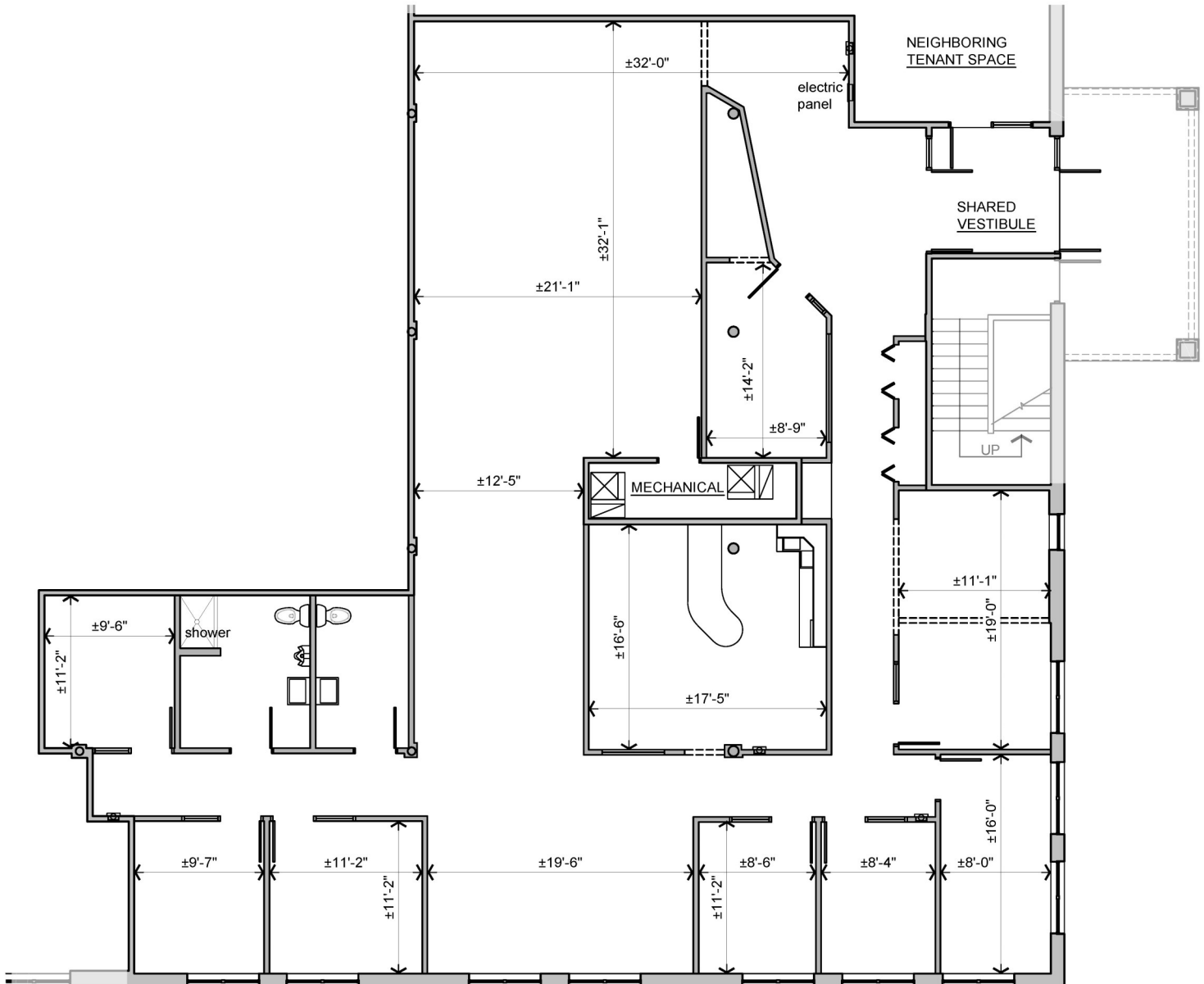
www.shcre.com



FIRST FLOOR REFERENCE MAP

Scale: 1" = 100'-0"

Suite 103 - 4,302 RSF with semi private entrance



Goldridge Building

3021 Harbor Lane North | Plymouth, MN 55447

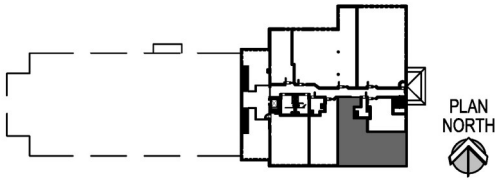
Jeff Houg

D: 952-300-9545

M: 612-889-2242

jhoug@shcre.com

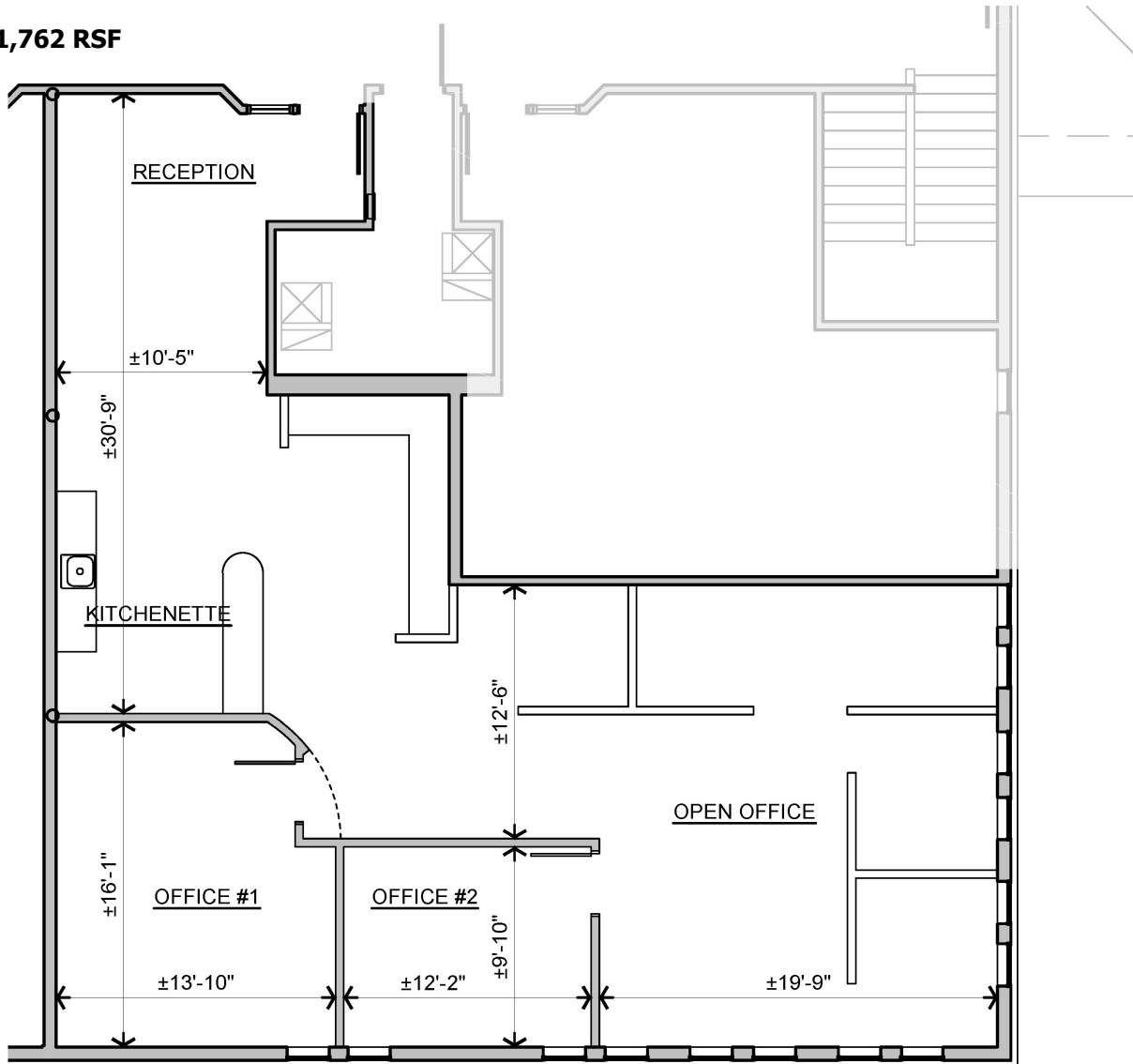
www.shcre.com



SECOND FLOOR REFERENCE MAP

Scale: 1" = 100'-0"

Suite 205 - 1,762 RSF



Goldridge Building

3021 Harbor Lane North | Plymouth, MN 55447

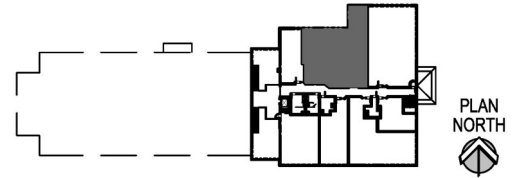
Jeff Houg

D: 952-300-9545

M: 612-889-2242

jhoug@shcre.com

www.shcre.com



SECOND FLOOR REFERENCE MAP

Scale: 1" = 100'-0"

Suite 214 - 2,379 RSF

