

# 1400 West Lake Street

Minneapolis, MN 55408



**Iconic Uptown building located at the corner of Lake St and Girard Ave S. Once home to the acclaimed Stella's Fish Café and considered one of the best rooftops in the Twin Cities, this highly visible historical building is waiting for a new tenant to bring their unique vision to life.**

- ◆ Available immediately
- ◆ 16,426 RSF
- ◆ Commercial kitchen capability
- ◆ 4 event spaces
- ◆ 3 full bars
- ◆ Multi level rooftop with full bar
- ◆ Neighborhood: Uptown/Lowry
- ◆ Lake of the Isles, Bde Maka Ska trails, and Chain of Lakes parks.
- ◆ Professionally Managed

**Jeff Houg**

**D: 952-300-9545**

**M: 612-889-2242**

**jhoug@shcre.com**

**www.shcre.com**



# 1400 West Lake Street

Minneapolis, MN 55408

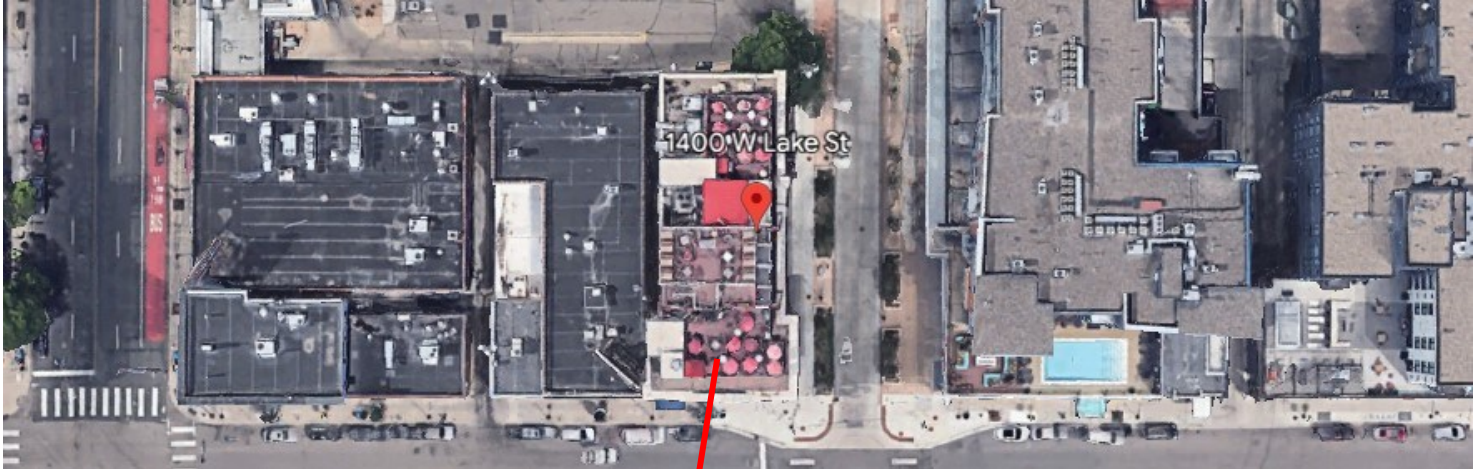
Jeff Houg

D: 952-300-9545

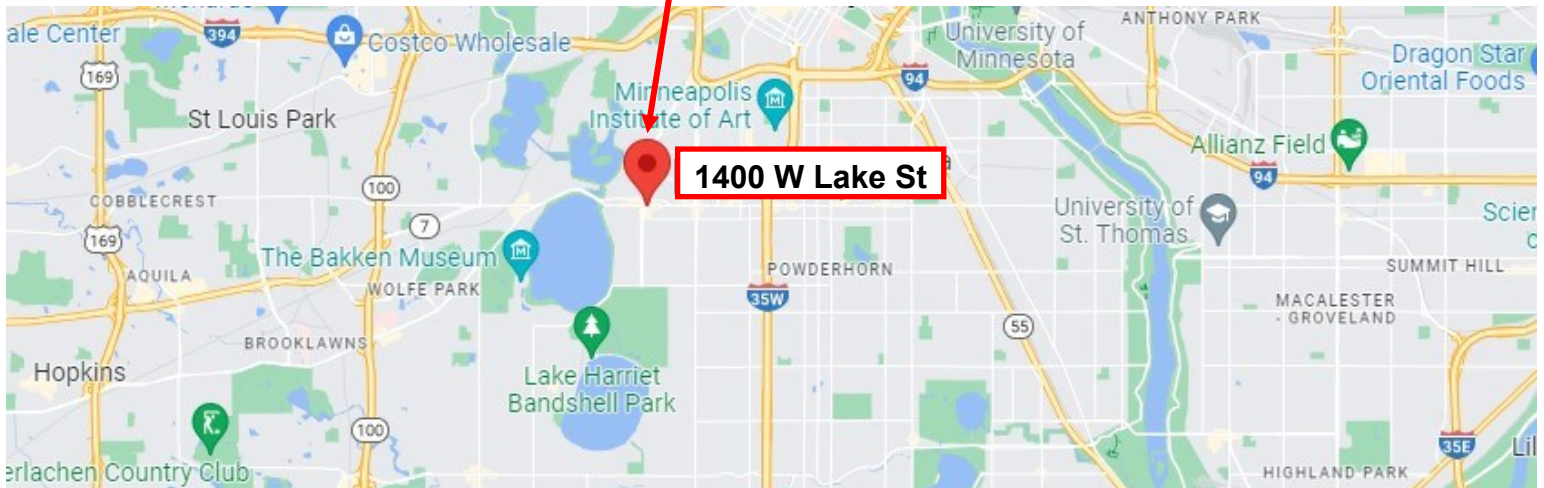
M: 612-889-2242

[jhoug@shcre.com](mailto:jhoug@shcre.com)

[www.shcre.com](http://www.shcre.com)



- \* Convenient access to interstates 94, 394 and 35W
- \* Highly walkable to the trails, beaches and parks
- \* Variety of transportation options





**1400 West Lake Street**  
Minneapolis, MN 55408

Jeff Houg

D: 952-300-9545

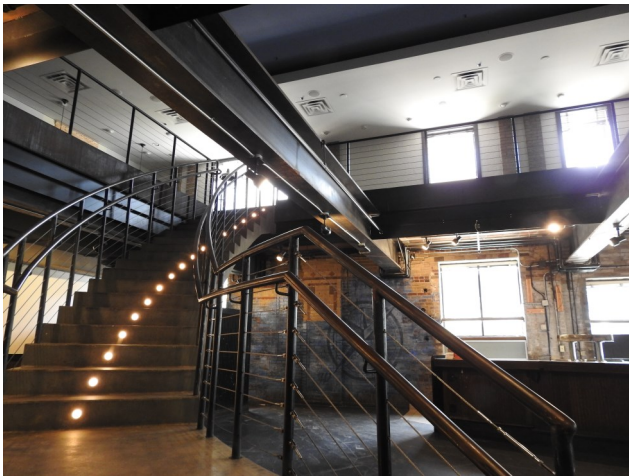
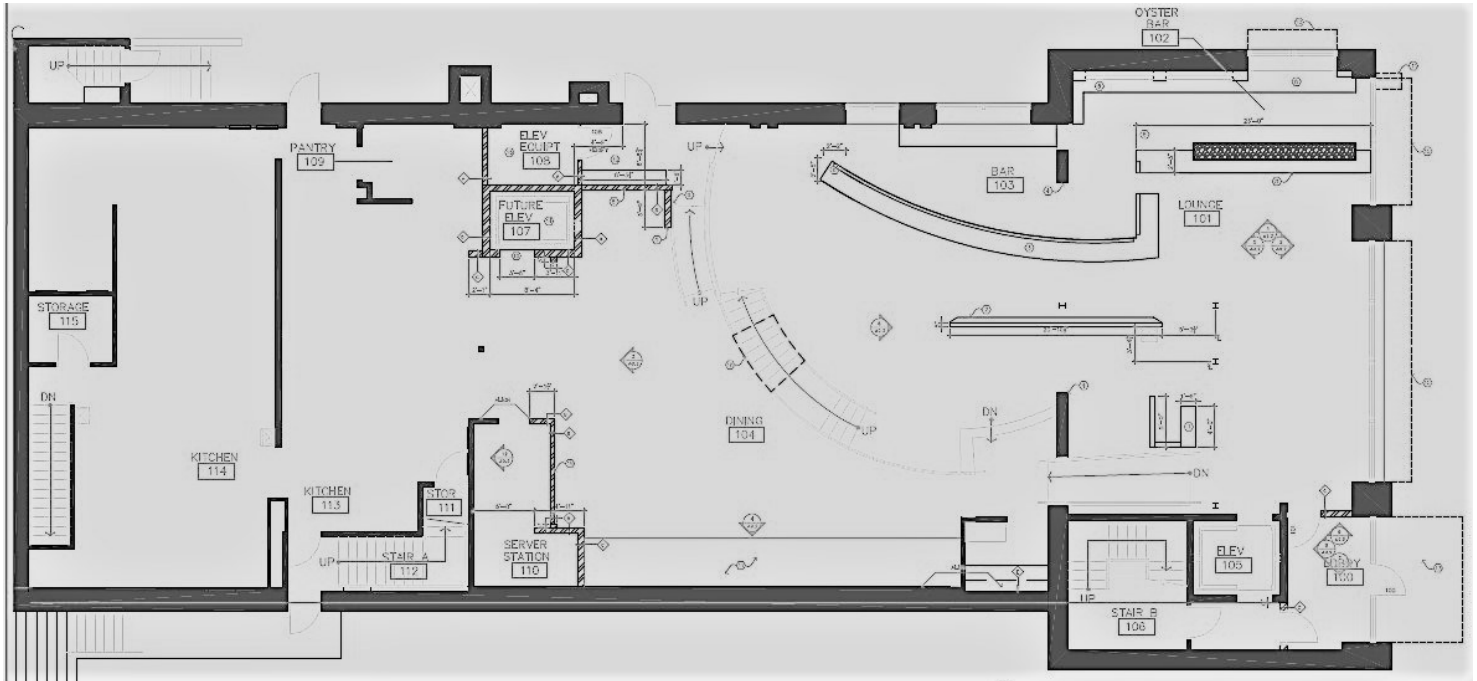
M: 612-889-2242

[jhoug@shcre.com](mailto:jhoug@shcre.com)

[www.shcre.com](http://www.shcre.com)



**First Floor 7,134 RSF**



**1400 West Lake Street**  
Minneapolis, MN 55408

Jeff Houg

D: 952-300-9545

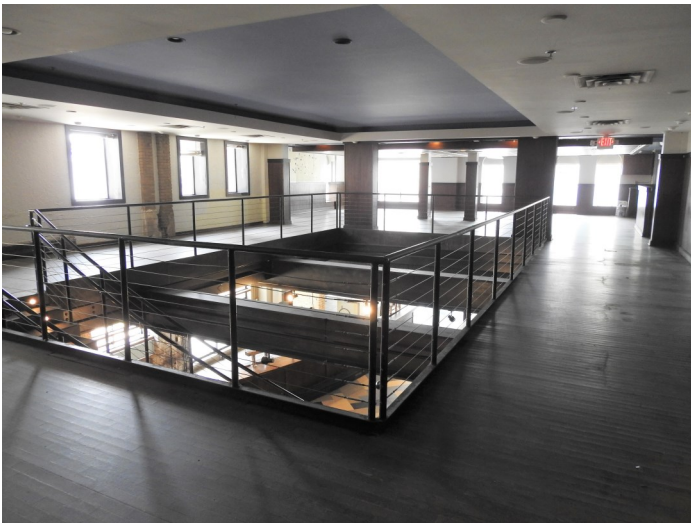
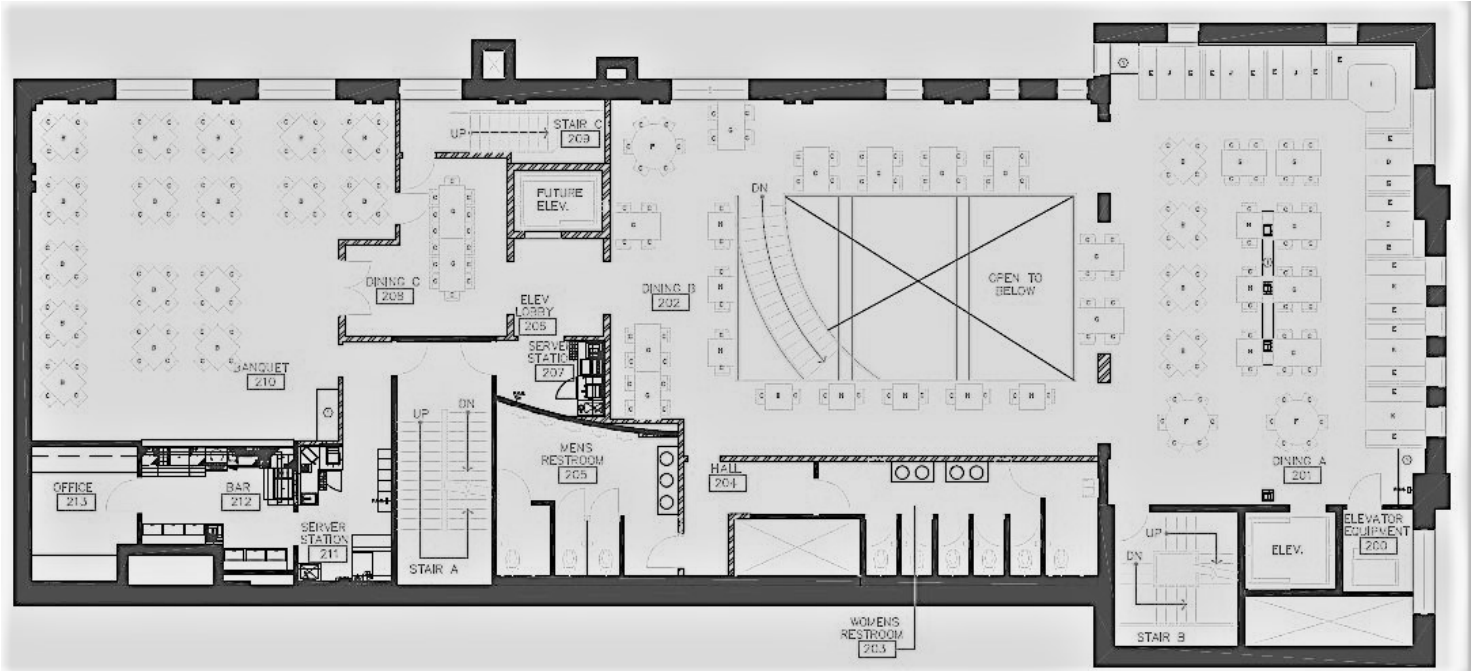
M: 612-889-2242

[jhoug@shcre.com](mailto:jhoug@shcre.com)

[www.shcre.com](http://www.shcre.com)



## Second Floor 6,554 RSF





**1400 West Lake Street**  
Minneapolis, MN 55408

Jeff Houg

D: 952-300-9545

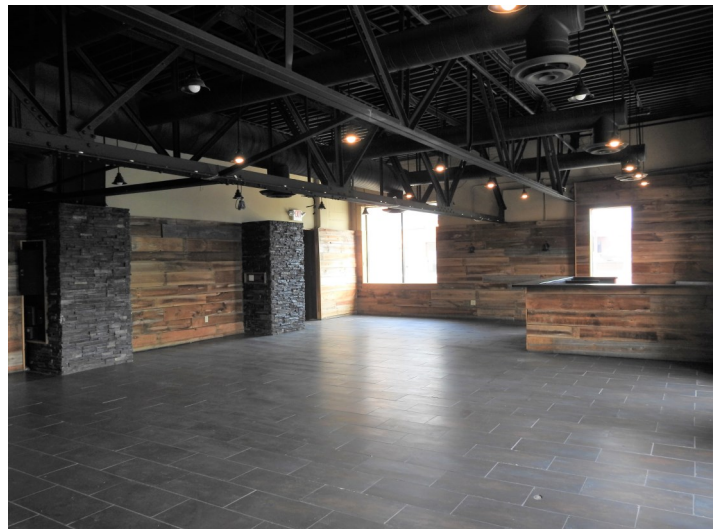
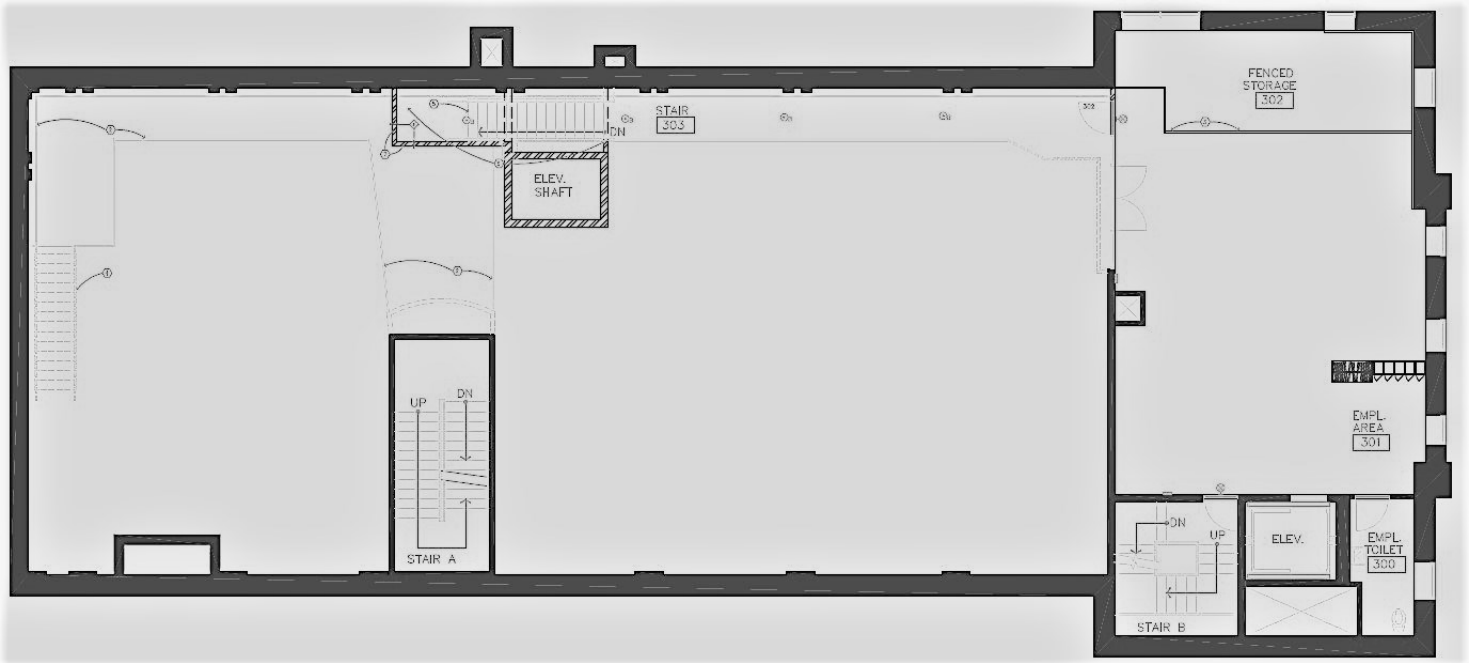
M: 612-889-2242

[jhoug@shcre.com](mailto:jhoug@shcre.com)

[www.shcre.com](http://www.shcre.com)



**Third Floor - 1,257 RSF**



# 1400 West Lake Street

Minneapolis, MN 55408

Jeff Houg  
D: 952-300-9545  
M: 612-889-2242  
jhough@shcre.com  
www.shcre.com



## Rooftop

