

1400 West Lake Street

Minneapolis, MN 55408



Iconic Uptown building located at the corner of Lake St and Girard Ave S. Once home to the acclaimed Stella's Fish Café and considered one of the best rooftops in the Twin Cities, this highly visible historical building is waiting for a new tenant to bring their unique vision to life.

- ◆ Available immediately
- ◆ 16,937 RSF
- ◆ Commercial kitchen capability
- ◆ 4 event spaces
- ◆ 3 full bars
- ◆ Multi level rooftop with full bar
- ◆ Neighborhood: Uptown/Lowry
- ◆ Lake of the Isles, Bde Maka Ska trails, and Chain of Lakes parks.
- ◆ Professionally Managed

Jeff Houg

D: 952-300-9545

M: 612-889-2242

jhoug@shcre.com

www.shcre.com



1400 West Lake Street

Minneapolis, MN 55408

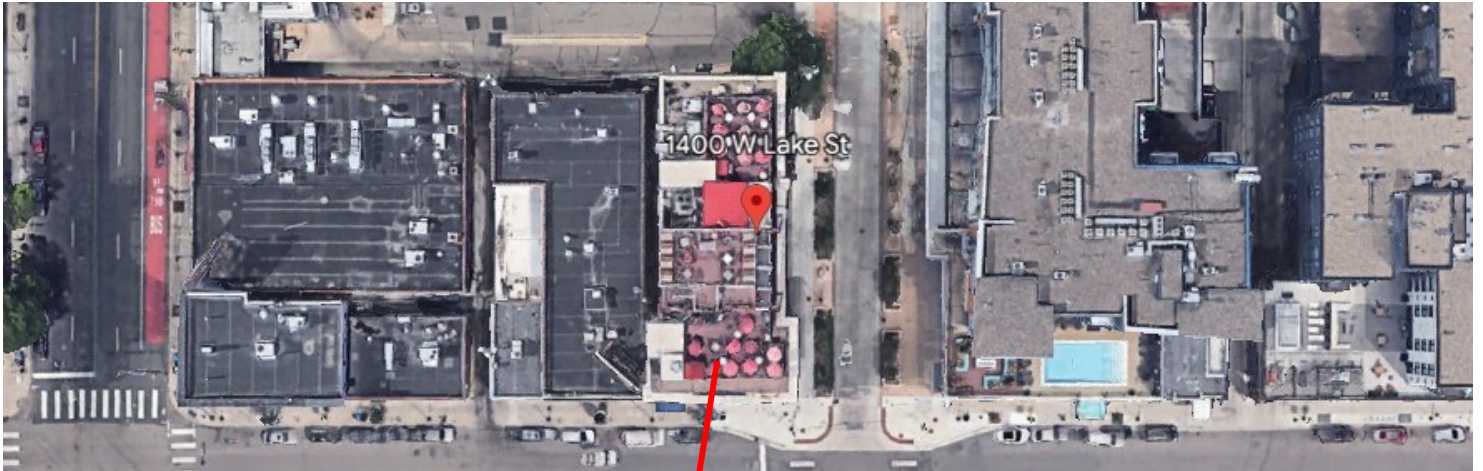
Jeff Houg

D: 952-300-9545

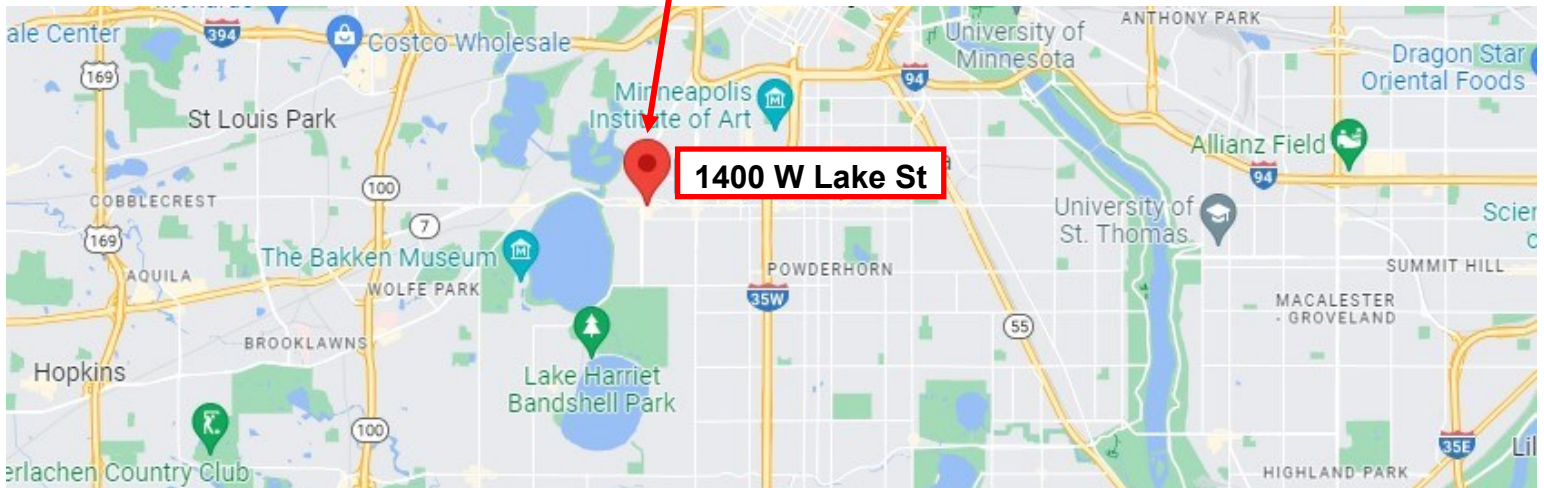
M: 612-889-2242

jhoug@shcre.com

www.shcre.com



- * Convenient access to interstates 94, 394 and 35W
- * Highly walkable to the trails, beaches and parks
- * Variety of transportation options



1400 West Lake Street

Minneapolis, MN 55408

Jeff Houg

D: 952-300-9545

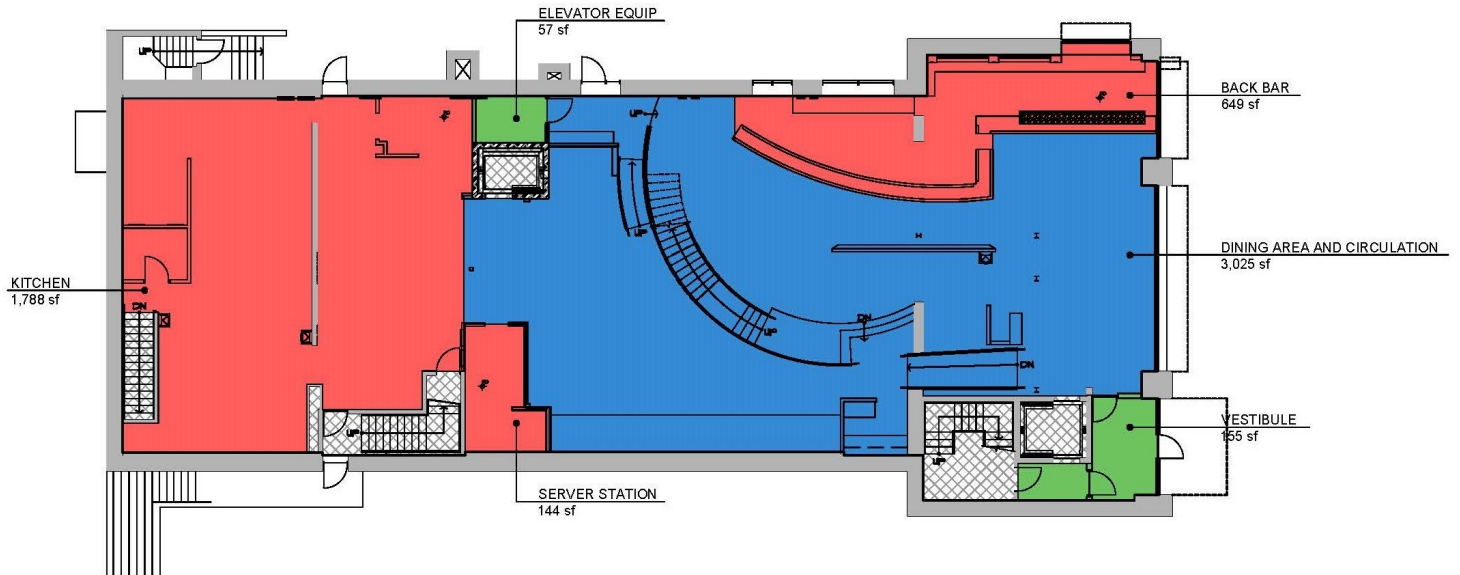
M: 612-889-2242

jhoug@shcre.com

www.shcre.com



First Floor 5,818 RSF

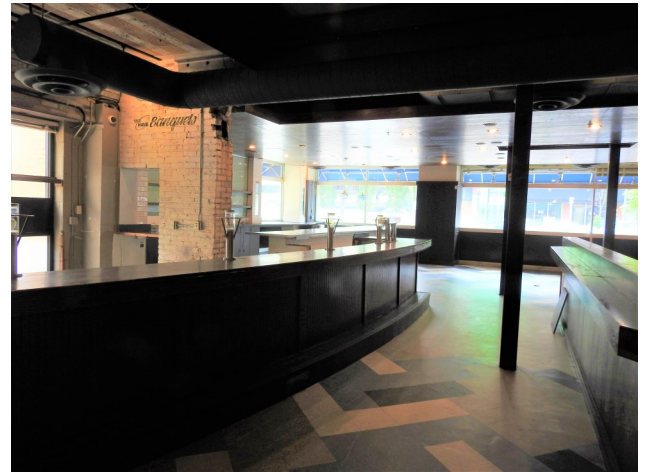
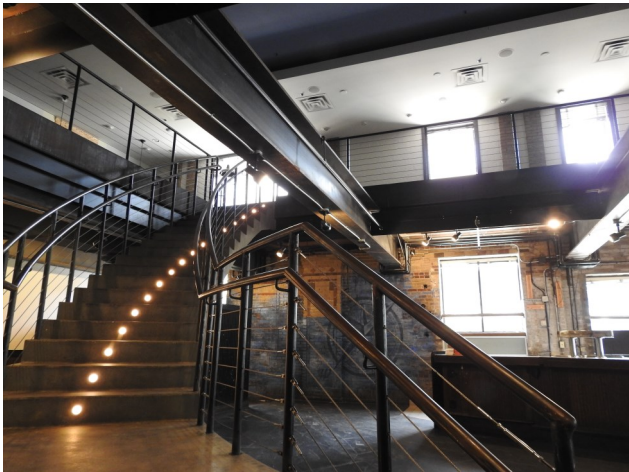


FIRST FLOOR



5,818 sf USEABLE FLOOR AREA

CODE REVIEW INCLUDING OCCUPANT LOAD AND EXITING REQUIREMENTS IS REQUIRED FOR ALL PROPOSED FURNITURE LAYOUTS AND ROOM USES.



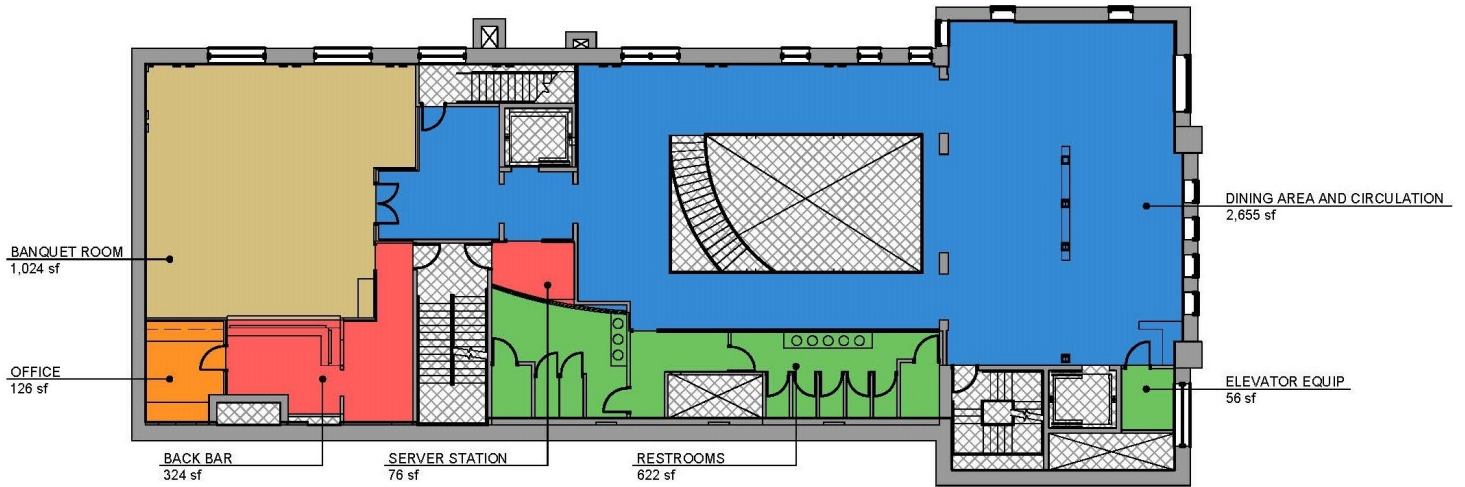
1400 West Lake Street

Minneapolis, MN 55408

Jeff Houg
D: 952-300-9545
M: 612-889-2242
jhoug@shcre.com
www.shcre.com



Second Floor 4,883 RSF

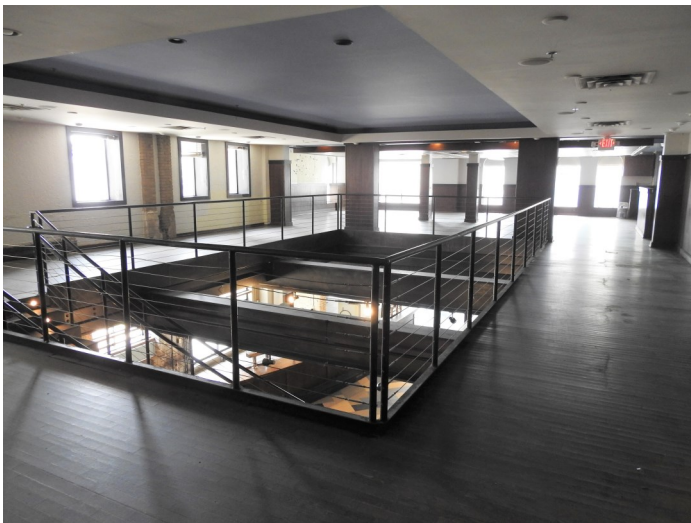


SECOND FLOOR



4,883 sf USEABLE FLOOR AREA

CODE REVIEW INCLUDING OCCUPANT LOAD AND EXISTING REQUIREMENTS IS REQUIRED FOR ALL PROPOSED FURNITURE LAYOUTS AND ROOM USES.

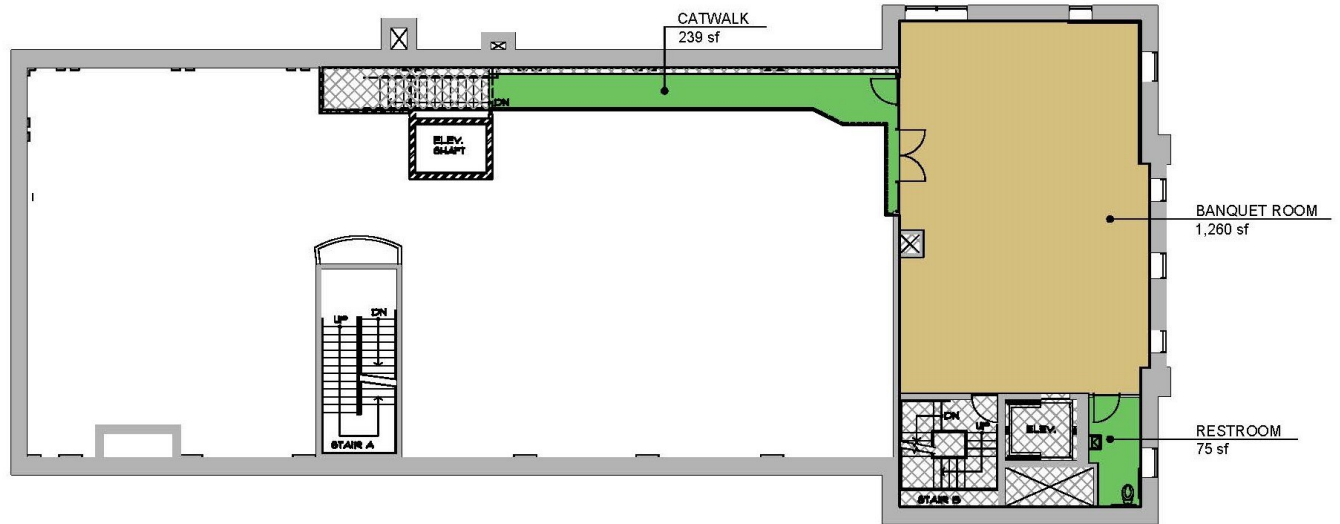


1400 West Lake Street
Minneapolis, MN 55408

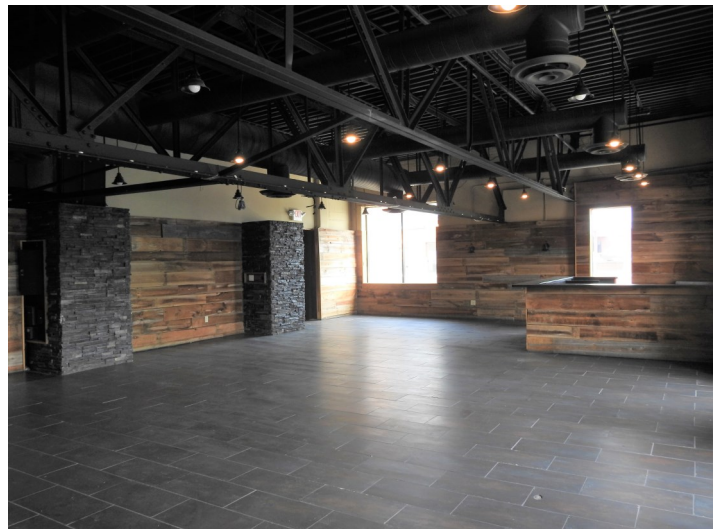
Jeff Houg
D: 952-300-9545
M: 612-889-2242
jhoug@shcre.com
www.shcre.com



Third Floor / Mezzanine - 1,574 RSF



CODE REVIEW INCLUDING OCCUPANT LOAD AND EXITING REQUIREMENTS IS REQUIRED FOR ALL PROPOSED FURNITURE LAYOUTS AND ROOM USES.

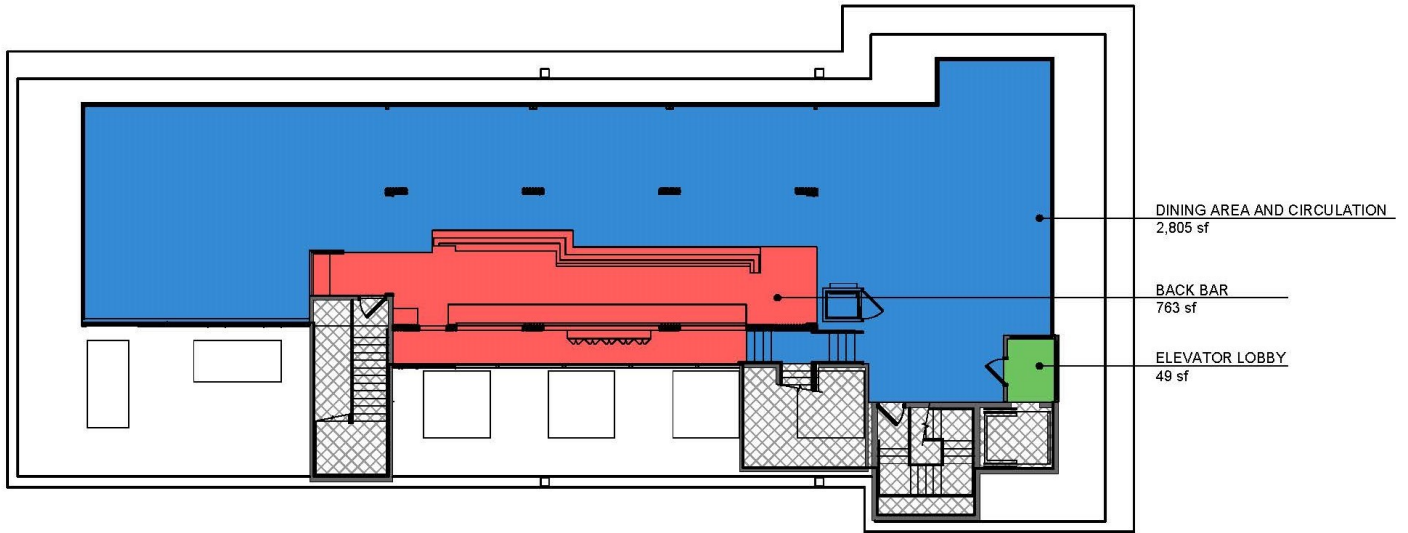


1400 West Lake Street
Minneapolis, MN 55408

Jeff Houg
D: 952-300-9545
M: 612-889-2242
jhoug@shcre.com
www.shcre.com



Roof Top 3,617 RSF



ROOF DECK



3,617 sf USEABLE FLOOR AREA

CODE REVIEW INCLUDING OCCUPANT LOAD AND EXITING REQUIREMENTS IS REQUIRED FOR ALL PROPOSED FURNITURE LAYOUTS AND ROOM USES.

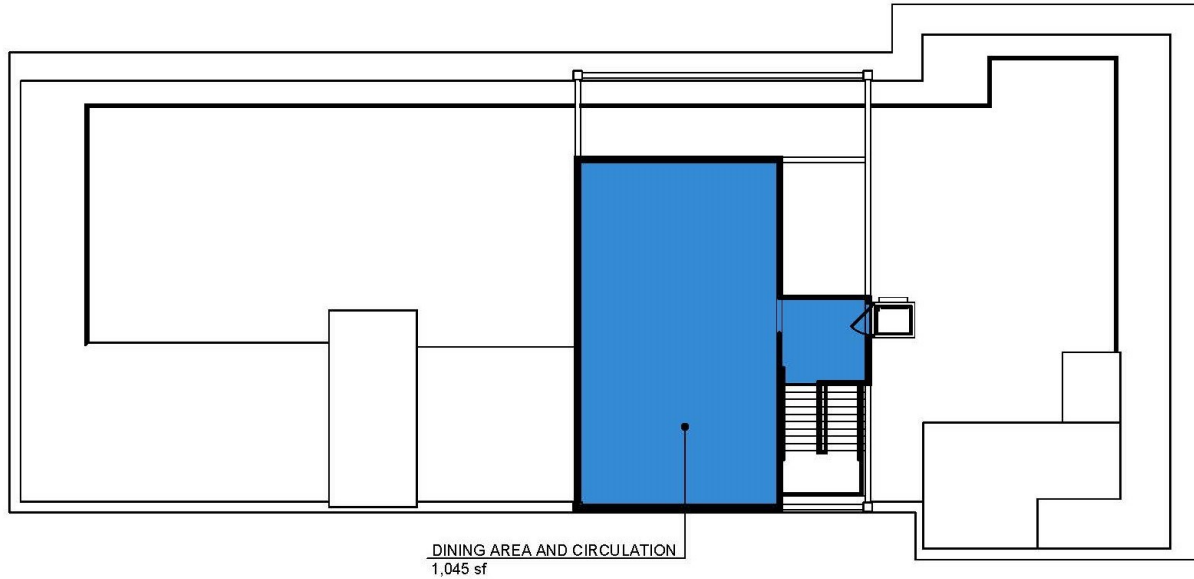


1400 West Lake Street
Minneapolis, MN 55408

Jeff Houg
D: 952-300-9545
M: 612-889-2242
jhoug@shcre.com
www.shcre.com



Sky Deck 1,045 RSF



SKY DECK



1,045 sf USEABLE FLOOR AREA

CODE REVIEW INCLUDING OCCUPANT LOAD AND EXITING REQUIREMENTS IS REQUIRED FOR ALL PROPOSED FURNITURE LAYOUTS AND ROOM USES.

